

2004

ANNUAL STATISTICAL REPORT



TORONTO POLICE SERVICE

Published June 2005

Preamble

The statistical data used for the production of the Toronto Police Service's Annual Statistical Report is derived from a number of computer sources. These systems include, but are not limited to:

- eCOPS - Enterprise Case Occurrence Processing System,
- COPS - Computerized Occurrence Processing System,
- CIPS - Criminal Information Processing System.

These computer sources are considered to be 'live' as offences reported may be entered into their databases on a daily basis. For example, it is not unusual for historic crimes such as sexual assaults, to be reported year(s) after the offences have been committed. Those types of offences are counted in the year that the offence occurred and not when they've been reported. This may result in a minor variance occurring to some numbers reported in previous Annual Statistical Reports.

The crime information contained in this report provides offence based statistics. In offence based statistics, all offences involved in an incident are counted. This differs from incident based statistics where more than one offence may have occurred in the incident but only the most serious offence is counted in the crime statistics.

Comparing Crime Statistics

The Toronto Police Service reports its crime statistics using the Offence based method (counting all offences). Other Canadian Police Services and organizations such as Statistics Canada report their crime statistics using incident based statistics (the most serious offence per incident is counted). For example, a suspect unlawfully enters into a dwelling unit and takes several items and upon leaving the house, the suspect encounters the homeowner. An altercation occurs and the suspect assaults the homeowner. In the offence based method this occurrence would be counted as a break and enter and an assault. This occurrence would only be counted as one offence under the incident based counting method.

Incident based statistics cannot be directly compared or evaluated against offence based statistics. Furthermore, statistical crime data may be categorized using predetermined definitions in response to specific questions or criteria. Prior to comparing statistics from various other sources, the method used to categorize the data must be identified in order to ensure that the same type of information is being analyzed.

Care must always be taken when comparing statistics published in this report to reports published by other agencies such as Statistics Canada.

Acknowledgement

Managing Editor

Corporate Planning

Editor

Corporate Planning

Crime Statistics

Analysis Support - Corporate Planning

Statistical Report Layout/Design

Karottu George, Analysis Support - Corporate Planning

Peter Koutsovasilis, Analysis Support - Corporate Planning

A special thanks to all contributors, especially Det. Dave Angus, Det. Constable Wayne Johnson, and Maureen Connolly of the Analysis Support Section of Corporate Planning for their unfailing support.

Printing and Production

Reproduction in whole or in part is permitted subject to the requirement that it is not for monetary gain; reproduced material remains in context; and the source is acknowledged on all copies as follows: Toronto Police Service 2004 Statistical Report, along with date and page references.

Visit our Website at: ***www.TorontoPolice.on.ca***

You may reach us by E-mail at:

Corporateplanning@TorontoPolice.on.ca

<i>Table Of Contents</i>

Introduction	i
2004 Statistics at a Glance	ii
Glossary of Terms	iii
Uniform Strength, Expenditures & Distribution	1
Gross Operating Budget	1
Police Personnel by Rank and Classification	2
Police Personnel by Division and Field Command	3
Fleet Information	4
Classification of Incoming Calls (Calls for Service), AT&T Language Line Service	5
Public Complaints	6
Community Based & Miscellaneous Policing Statistics	7-8
General Data by Division and Field Command	9
City of Toronto Highlights - Traffic Collisions	10-11
<u>General Crime Information</u>	
City of Toronto Highlights - Criminal Code Offences	12-14
Criminal Code Offences by Category	15-16
Selected Offences Against Victims by Age and Sex	17
Persons Charged by Age and Sex	18-19
Violent Crime Statistics	20
Selected Offences Against Police Officers	21
Total Incidents Reported to Statistics Canada	21
<u>Criminal Code Offences Reported and Cleared</u>	
Field Command and Toronto Totals	22
By Division and Field Command	23-26
<u>Traffic and Other Offences</u>	
Criminal Code Traffic Charges Laid by Division	27
Charges Laid For Other Offences by Division	28
<u>Persons Charged</u>	
Persons Charged With Criminal Code Offences And Other Federal Statutes	29
Persons Charged With Criminal Code Traffic Offences	30
Persons Charged By Case Unit For Criminal Code And Other Federal Statutes	31

INTRODUCTION

The Toronto Police Service publishes crime statistics based upon the number of reported offences whereas Statistics Canada publishes crime statistics based on reported incidents of crime. In offence based statistics, all offences involved in an incident are included, where as in the incident based statistics, more than one offence may be included in one incident but only the most serious crime is included in the crime statistics. So care should be taken when comparing statistics published by both agencies.

Types of Offences

Violent Offences are crimes involving the application or threat of application of force to a person.

Property Offences involve unlawful acts with respect to property but do not involve the use or threat of violence against an individual.

Other Criminal Code offences include the remaining non-traffic *Criminal Code* offences that are classified as neither violent nor property offences.

C. D. S. A. Offences involve offences under the federal Controlled Drugs and Substances Act. These offences comprise of possession, trafficking, importation or cultivation of various illicit, controlled and restricted drugs.

Other Federal Statute offences include violations under all other federal statutes. They may include Bankruptcy Act, Customs Act, Excise Act, Immigration Act.

Provincial Statute offences include all violations under provincial statutes excepting traffic related statutes. Examples are Coroner's Act, Environmental Protection Act, Mental Health Act and Liquor Licence Act. The majority of these offences come under Liquor Licence Act.

General Information

Due to change in the interpretation of the Law, C. D. S. A. charges laid by Toronto Police Service are considerably lower in 2003.

Offences published in a particular year include offences reported to or become known to police during the year. However, offences occurred in the past can be reported in a future year. A typical example is the sexual assault category. Similarly, concluded offences include those committed during previous years.

In September 2003 the Toronto Police Service implemented a new records management system as a result statistics in this report for years prior to 2003 have been recalculated.

2004 Statistics at a Glance

- Reported **Criminal Code Offences** *excluding traffic offences* decreased 3.0 % in 2004 over the previous year.
- **Violent Crime** decreased 4.2 % in 2004 from 2003.
- **Property Crime** decreased 4.3 % in 2004 from 2003.
- **Other Criminal Code Offences** increased by 1.0 % in 2004 from 2003.
- There were 64 homicides in 2004, down 4.5 % from 2003.
- There were 2,902 sexual assaults in 2004 compared to 2,680 in 2003.
- Total non-sexual assaults decreased by 5.9 % in 2004 over 2003.
- Total robbery decreased 2.1 % in 2004 compared to 2003; robbery to banks and financial institutions increased by 3.5 % in 2004.
- Break and enters to houses increased 1.7 % in 2004 compared to 2003; entries to apartments increased 15.0 %.
- There were 10,248 motor vehicles reported stolen in 2004 compared to 11,911 in 2003 (a decrease of 14.0%).
- On the Toronto roads: There were 60 fatal collisions in 2004, down 16.7% over the past year; and resulting in 66 fatalities. There were 13,093 injury collisions and 18,409 people were injured. The total number of reportable motor vehicle collisions stood at 56,375 in 2004 compared to 66,704 in 2003, a decrease of 15.5%.
- There were 862 complaints received against police officers in 2004, compared to 735 in 2003.
- Number of vehicles stopped by R.I.D.E. (Reduced Impaired Driving Everywhere) increased in 2004 by 65.7% to 224,923 compared to 135,712 in 2003.
- Total calls for service through Communications Centre decreased 2.8% while the total dispatched calls for service decreased 6.2% in 2004 over 2003. The Service reaches out to wider sections of the community by providing service in languages other than English through the AT&T Language Line Service. In 2004 there were 3,265 calls for service received in 55 languages other than English.

Glossary of Terms

Adult and Youth Charges: Refers to the total number of charges and alternative dispositions laid by police against adults (18 years or older) and youths (12 to 17 years of age).

Incident: An occurrence of an event (non-criminal or criminal). An incident may consist of a number of offences.

Offence: An offence is categorized as a violation against the Criminal Code of Canada, the Federal Controlled Drugs and Substances Act and other Federal, Provincial and Municipal statutes. Offences are counted in the year they occurred rather than in the year the offence is reported to the police. The Toronto Police Service counts all offences occurring in a single incident. Statistics Canada's Uniform Crime Report (UCR) count only the most serious offences per incident.

Substantiated Offence: When an alleged criminal act is reported to the police, the offence is counted as a reported incident. The Toronto Police Service then conducts a preliminary investigation to determine the soundness of the report. In some occasions a crime reported to the police proves to be unsubstantiated. The unsubstantiated incidents are deducted from the number of reported offences to develop genuine offences data.

Clearance Rate: A Criminal offence can be considered cleared when a charge is laid, recommended or cleared by other methods. For example, an offence is considered cleared when it has been solved. Cleared by a charge being laid indicates that a person(s) has been charged in connection with an incident. A clearance rate is calculated by dividing genuine offences reported by the total offences cleared in a year. The clearance rate may exceed 100% in a given year due to the fact that offences cleared may be offences that have occurred in previous years.

Property Offences: Property crime includes unlawful acts committed for the purpose of attaining property, but do not involve the use or threat of violence against an individual. Property crime includes actual and attempted motor vehicle theft, other theft, actual and attempted break and enter, possession of stolen property, and fraud

Violent Offences: Crimes involving the application or threat of application of force to a person. They include homicide, attempted murder, sexual assault, non-sexual assault, other sexual offences, abduction and robbery. Traffic incidents that result in death or bodily harm are included under Criminal Code Traffic Offences.

Other Criminal Code Offences: Includes the remaining non-traffic Criminal Code Offences that are classified as neither violent or property offences. For example mischief, bail violations, arson, and disturbing the peace are included in other Criminal Code Offences.

Criminal Code Traffic Offences: Includes dangerous driving, impaired driving, refuse breath/blood sample and failure to remain at the scene of an accident.

Drug Offences: Involves offenders under the Federal Controlled Drugs and Substances Act. These offences include possession, trafficking, import/export, and production of various illicit, controlled and restricted drugs.

Other Federal Statutes: Offences includes violations under the Youth Criminal Justice Act, Canada Health Act, Firearms Act, Immigration Act, Bankruptcy Act and other Federal statutes.

Provincial Acts: Includes all violations under Provincial statutes with the exception of traffic related statutes. Some examples include the Coroner's Act, Environmental Protection Act, Mental Health Act and the Liquor Licence Act.

Municipal Bylaws: Includes violations under the City of Toronto Municipal By-Laws.

Uniform Strength and Expenditures

TPS 2004 Statistical Report

	2000	2001	2002	2003	2004*
Population Served	2,565,555	2,594,205	2,618,605	2,643,842	2,669,936
Uniform Strength	5,149	5,028	5,119	5,295	5,242
Uniform Strength:Population	1:498	1:516	1:512	1:499	1:509
Actual Expenditures(Gross \$)	579,729,813	603,387,884	635,497,010	673,216,463	707,232,668+
Per Capita Cost*	225.97	232.59	242.69	254.64	264.89+

† Estimate (based on projected expenditures).

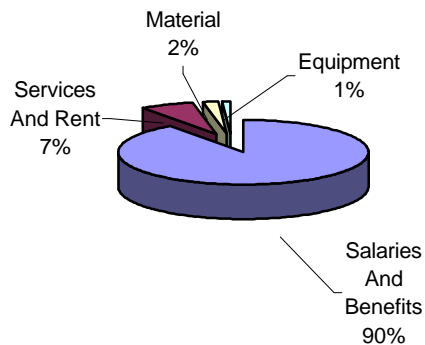
* The Daytime Population Estimate for The City Of Toronto in 2004 is 2,746,947.
Daytime population includes visitors and people who work in the City
but reside out of the City of Toronto Boundaries.

Gross Operating Budget

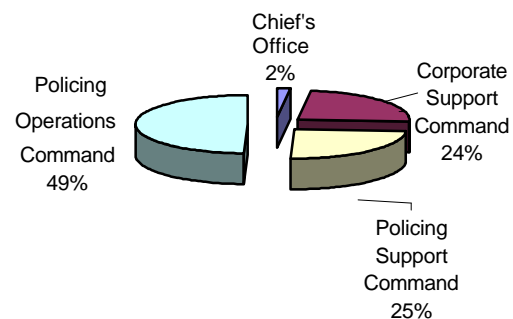
Year	Budget (\$)*	Change from Previous Year (\$)	% Change from Previous Year
2000	577,893,300	39,981,900	7.43
2001	600,934,100	23,040,800	3.99
2002	634,336,300	33,402,200	5.56
2003	668,997,800	34,661,500	5.46
2004	707,767,900	38,770,100	5.80

Gross Operating Budget

Distribution by Feature



Distribution by Appropriation



Police Personnel by Rank and Classification*

TPS 2004 Statistical Report

	2000	2001	2002	2003	2004
Chief	1	1	1	1	1
Deputy Chief	4	2	2	2	1
Staff Superintendent	0	6	6	6	7
Superintendent	21	23	22	21	22
Staff Inspector	26	23	24	25	25
Inspector	34	38	35	33	34
Staff Sergeant/Detective Sergeant	238	259	257	260	266
Sergeant/Detective	886	900	922	922	911
Police Constable	3,939	3,776	3,850	4,025	3,975
Total Uniform Strength	5,149	5,028	5,119	5,295	5,242
Chief Administrative Officer- Policing	1	1	1	1	1
Director	4	4	4	4	5
Parking Enforcement Officer	310	290	348	350	359
Court Officer	279	274	297	306	353
Document Server	16	14	15	19	17
Communications Operator	218	219	224	225	222
Cadets-in-Training	223	236	215	72	111
Custodial Officer	5	5	4	5	5
Other Civilians	1,219	1,219	1,194	1,056	1,131
Total Civilian Strength	2,275	2,262	2,302	2,038	2,204
Grand Total	7,424	7,290	7,421	7,333	7,446

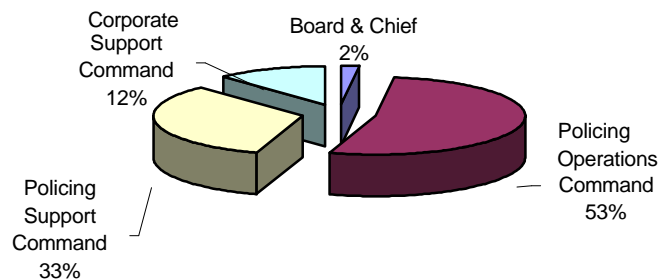
Auxiliary personnel**	302	535	628	570	640
Temporary Employee	92	115	177	173	121
School Crossing Guard [☞]	697	695	714	692	699
Part-time Court Officer	164	169	170	183	175
Part-time Employee - other	57	105	120	104	121

* As of December 31, 2004

** Includes other volunteers

[☞] Includes spares

Distribution of Personnel by Branches of the Service



Police Personnel by Division And Field Command (Actual)

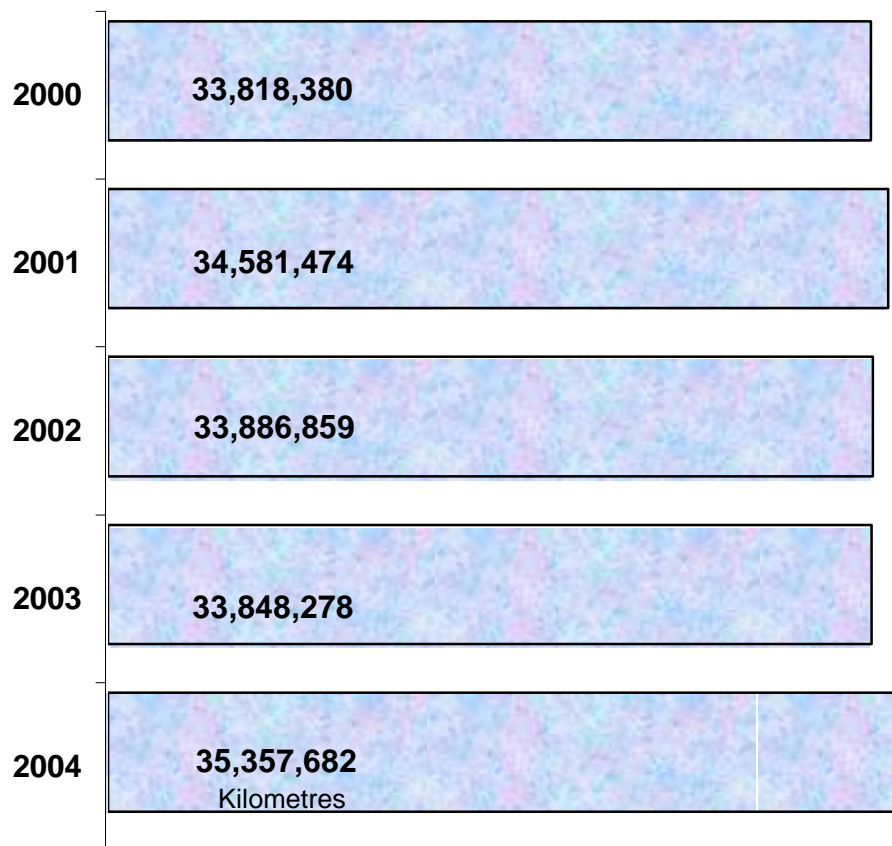
	Superintendent and Above	Staff Inspector	Inspector	Staff/Detective Sergeant	Sergeant/Detective	Police Constable	Uniform Strength	Civilian Strength	Total Strength	School Crossing Guard
CENTRAL FIELD COMMAND HQ	1	0	0	2	3	9	15	3	18	0
COP	0	1	0	3	7	20	31	6	37	0
11 Division	0	1	0	7	31	133	172	10	182	26
12 Division	1	0	1	7	30	132	171	11	182	48
13 Division	0	1	0	8	30	146	185	9	194	52
14 Division	1	0	2	9	48	245	305	15	320	46
51 Division	1	0	1	8	37	188	235	12	247	27
52 Division	1	0	2	9	49	186	247	20	267	4
53 Division	0	1	0	7	31	147	186	10	196	54
54 Division	0	1	0	9	31	140	181	10	191	43
55 Division	0	1	1	8	38	166	214	13	227	57
Central Field Command*	5	6	7	77	335	1,512	1,942	119	2,061	357
AREA FIELD COMMAND HQ	1	0	0	2	1	2	6	6	12	0
22 Division	1	0	1	7	32	179	220	12	232	70
23 Division	1	0	1	8	31	183	224	12	236	47
31 Division	1	0	1	8	32	224	266	13	279	36
32 Division	1	0	1	7	32	219	260	9	269	48
33 Division	0	1	0	8	31	137	177	10	187	38
41 Division	1	0	1	8	43	257	310	14	324	50
42 Division	1	0	1	8	39	290	339	14	353	53
Area Field Command*	7	1	6	56	241	1491	1802	90	1892	342
POC	1	0	0	0	0	0	1	2	3	0
Grand Total	13	7	13	133	576	3,003	3,745	211	3,956	699

* Includes those assigned to Field Command Headquarters.

Does not include temporary and part-time civilian members.

	2000	2001	2002	2003	2004
Cars	1,193	1,228	1,231	1,315	1,316
Motorcycles	133	138	137	108	113
Other	149	145	141	92	106
Total Vehicles	1,475	1,511	1,509	1,515	1,535
Boats	19	19	19	24	19
Horses	25	25	26	29	29

Total Kilometres Driven by Police Vehicles



Classification of Incoming Calls

TPS 2004 Statistical Report

Calls Received at Communications Centre			Dispatched	Other
Year	Emergency*	Non-Emergency□	Calls	Calls**
2000	973,249	849,191	837,219	985,221
2001	983,343	886,119	864,095	1,005,367
2002	1,036,355	883,843	880,271	1,039,927
2003	1,052,464	904,530	926,697	1,030,297
2004	1,000,898	901,869	869,590	1,033,177

* 9-1-1 Emergency Calls.

** Advised, transferred, or no action taken.

Includes Non-emergency calls, Alarms, Parking Complaints, TTC, RIDE program, and other calls which include Administration, Internal etc.

AT&T Language Line Service (Calls made in languages other than English)

Number of Calls and top 10 ranks in 2000-2004*

Language	2000	2001	2002	2003	2004
Chinese	874(1)	854(1)	1,076(1)	1166(1)	1350(1)
Spanish	251(2)	353(2)	441(2)	460(2)	517(2)
Vietnamese	162(3)	244(3)	197(3)	180(3)	155(3)
Italian	145(5)	128(6)	190(4)	151(5)	149(5)
Portuguese	151(4)	146(5)	129(7)	156(4)	155(3)
Tamil	141(6)	167(4)	138(5)	120(7)	119(6)
Korean	121(8)	128(6)	128(8)	138(6)	150(4)
Russian	122(7)	94(9)	117(9)	100(8)	113(7)
French	120(9)	102(8)	132(6)	98(9)	98(9)
Polish	86(10)	106(7)	84(10)	91(10)	110(8)
Punjabi	73	57	64	60	55
Farsi	32	44	47	60	84(10)
Greek	24	21	37	30	23
Hungarian	40	59(10)	50	35	27
Arabic	13	34	13	20	25
Somali	27	13	17	25	21
Japanese	40	20	7	18	19
Hindi	31	15	22	22	27
Urdu	12	13	19	30	34
Turkish	8	18	37	16	21
German	2	0	10	5	6
Croatian	9	1	8	5	7
Total**	2,578	2,712	3,081	3,087	3,265

* Top Ten ranking shown in bracket

** Including other non-English languages

In the year 2004, 3,265 calls were made in 55 languages other than English.

Public Complaints

TPS 2004 Statistical Report

	2000	2001	2002	2003	2004
Total Complaints Received	813	742	704	735	862
Complaints Investigated	2000	2001	2002	2003	2004
Conduct - Less Serious	367	370	320	365	392
Conduct - Serious	207	125	150	118	94
Policy	12	1	1	1	3
Service	28	10	11	12	38

Type of Complaint	2000	2001	2002	2003	2004
Discreditable Conduct	387	332	338	355	302
Insubordination	4	4	2	5	4
Neglect of Duty	96	82	56	54	72
Deceit	7	3	4	2	1
Breach of Confidence	2	3	5	2	0
Corrupt Practice	3	3	3	5	3
Unlawful or Unnecessary Exercise of Authority	73	68	58	47	95
Damage to Clothing or Equipment	1	0	0	0	0
Consuming Drug or Alcohol in a Manner Prejudicial to Duty	1	0	0	0	0
Policy	12	1	1	1	3
Service	28	10	11	11	38
Unclassified	0	0	4	14	9
Total Allegations	614	506	482	496	527

Investigation Outcome	2000	2001	2002	2003	2004
Unsubstantiated	241	169	215	253	203
Informal Resolutions	154	130	104	91	97
Withdrawn	207	192	141	118	100
Misconduct Identified					
Unit Level Discipline	8	11	15	12	9
Hearings	2	4	3	11	2
Policy/Service - Action Taken	2	0	0	0	0
Not Concluded	0	0	4	11	116
TOTAL	614	506	482	496	527

Complaints - Not Investigated	2000	2001	2002	2003	2004
Frivolous	73	127	124	106	154
Vexatious	2	0	4	6	17
Made in Bad Faith	18	20	25	19	13
Not Directly Affected	30	16	19	34	48
Over 6 Months	32	46	20	23	51
Non-Jurisdiction	44	27	30	51	52
TOTAL	199	236	222	239	335

Community Based and Miscellaneous Policing Statistics

**Community Information/
Crime Prevention -
Community Relations**

	2000	2001	2002	2003	2004
Communities Involved in Neighbourhood Watch	772	758	772	1,064	846
Homes Involved in Neighbourhood Watch	408,406	399,067	408,406	381,702	447,915
Crime Prevention Presentations	1,880	1,702	1,437	1,761	2,237
Community Relations Presentations	4,369	2,383	2,096	10,907	11,872*
Substance Abuse/Safety Presentations	1,115	1,113	1,371	4,027	4,207*

*Includes school lectures, substance abuse and safety presentations conducted by Community School Liaison Officers to school children.

Intelligence Services

Hate/Bias Crime Occurrences	204	338	219	149	163
-----------------------------	-----	-----	-----	-----	-----

**R.I.D.E.(Reduced Impaired Driving Every where)
Year Round Statistics - Traffic Services**

Vehicles Stopped	115,112	154,536	170,891	135,712	224,923
Charges Laid	198	257	244	231	206

Alarm Program - Communications Support

Valid Alarms	885	1,000	1,059	1,136	1,066
False Alarms	27,704	26,883	29,042	29,956	31,048

Victim Services

Total Incidents	7,175	5,958	7,523	8,324	8,753
Telephone Assisted	6,846	5,674	7,205	7,788	8,253
On Scene	638	284	318	536	500
Domestic Related	4,807	3,932	4,779	3,422	4,160

Other Programs - Industrial Liaison

Labour disputes attended	37	53	36	28	32
Potential dispute contacts	10	20	16	14	21

Volunteer Resources (Hours Volunteered)

	48,236	51,255	45,000	85,000	73,386
--	--------	--------	--------	--------	--------

Crime Stoppers*

Arrests	323	273	191	216	474
Charges Laid	694	889	530	703	1,808

* City of Toronto statistics only

See next page

Community Relations/Community Liaison/Miscellaneous

Type of Presentation	Number of Presentations	Persons Attending
Speaking Engagements	123	5,876
School Lectures	9,766	245,450
Lectures to Reliefs/Platoons	145	2,738
Speaking Engagements - Other	269	11,780
Community Meeting Attended	1,446	15,310
Station Tours	123	1,971
Sub-Total	11,872	283,125
Media Relations(Radio, TV, Newspaper, Other Publications)*	384	54,473,598
Major Cultural Events- Co-ordinated/Assisted	186	6,976,312
External Presentation	195	20,552
Internal Presentation/Lectures	38	704
External Meeting/Lectures	355	2,900
Internal Meeting	560	2,447
Divisional Assistance/Support Lectures	186	1,001,721
Conference/Seminars	20	2,860
Other Duties	160	217,338
Sub-Total	2,084	62,698,432
Grand Total	13,956	62,981,557

*Includes presentations by Community School Liaison Officers.

**The figure 54,473,598 includes audience/readership of TV, Radio, News Papers and other Publications.

Substance Abuse/Safety Presentations	Count
Streetproofing	2,019
Alcohol and Drugs	1,784
Law	139
Sexual Abuse	30
Abuse of elderly	157
Family violence	78
Total	4,207

Crime Prevention

Type of Presentation	Number of Presentations	Persons Attending
Neighbourhood Watch	152	5,791
Home security/High-rise security	361	5,492
Office security	267	2,992
Personal safety	550	11,978
Senior citizen safety	142	4,822
Victims of crime	351	1,227
Other	414	22,159
Total	2,237	54,461

Communities involved in Neighbourhood Watch	846
Homes involved in Neighbourhood Watch	447,915
Banks and Business premises visited	2,486
Serious break and enter call-backs	1,730
Crime prevention pamphlets distributed	175,000
Community Safety Audit Conducted	413
Crime prevention through environmental design(CPTED Audits) conducted	171

General Data by Division and Field Command

TPS 2004 Statistical Report

	Estimated Population	Area (sqkm)	Estimated Gross Expenditures(\$)	Dispatched calls	Motor Vehicles		Bicycles Stolen
					Stolen	Recovered	
11 Division	102,266	15.9	14,571,862	28,239	275	191	263
12 Division	98,732	18.5	15,584,670	33,304	418	293	66
13 Division	143,232	19.2	16,252,954	35,749	350	255	132
14 Division	155,479	15.7	27,582,493	53,393	561	382	613
51 Division	90,861	8.6	18,633,089	39,162	407	316	376
52 Division	32,766	9.2	27,286,361	40,796	245	183	613
53 Division	175,978	31.3	14,151,862	32,013	409	272	294
54 Division	141,867	20.4	15,814,603	34,761	366	286	228
55 Division	121,246	17.0	19,348,294	35,529	326	257	407
Central Command	1,062,427	155.8	169,226,188	332,946	3,357	2,435	2,992
22 Division	196,426	66.9	19,345,018	43,658	838	578	211
23 Division	166,042	56.6	18,704,130	34,583	840	572	77
31 Division	195,451	47.7	23,754,362	47,342	1030	701	108
32 Division	217,093	62.6	21,448,399	44,840	891	659	209
33 Division	194,605	53.0	15,992,740	33,189	597	462	116
41 Division	246,867	53.0	26,937,889	54,646	1154	866	166
42 Division	391,025	135.0	28,185,938	61,956	1478	1,101	161
Area Command	1,607,509	474.8	154,368,476	320,214	6,828	4,939	1,048
Toronto	2,669,936	630.6	323,594,664†	869,590††	10,248**	7,374	4048*

† Includes Division totals only.

The grand total of the estimated gross expenditure of the Service was \$707,232,668.

†† Includes 96,574 CARU calls, 101,995 Parking Enforcement Unit Dispatched Events, 1,278 Marine Unit Events and 16,583 other front line calls.

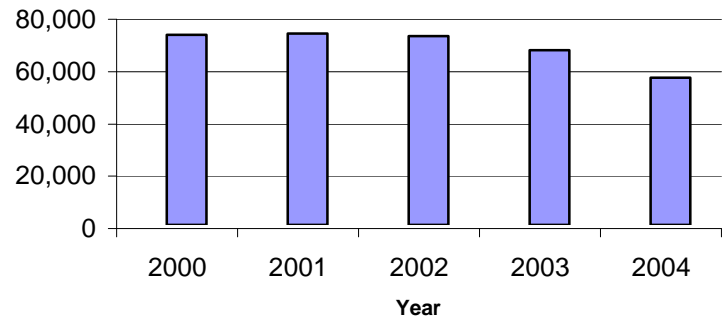
* Includes 8 bicycles stolen from undetermined locations.

** Includes 63 motor vehicles stolen from undetermined locations.

Source for all figures: Toronto Traffic Data Centre and Safety Bureau

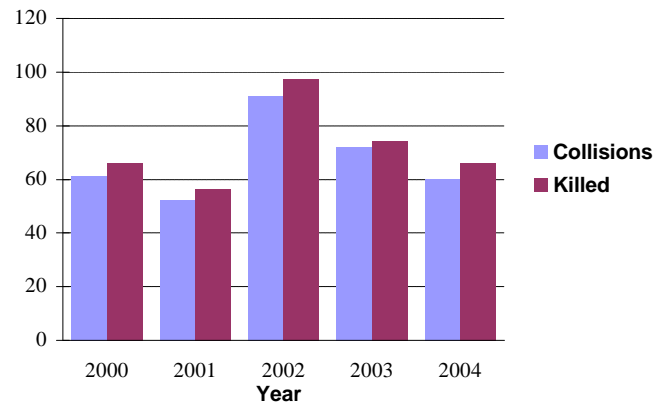
Total Collisions (Excludes Non-Reportable Collisions)

Year	Total	% Change	Non-Reportable
2000	72,631	23.3	N/A
2001	73,174	0.7	N/A
2002	72,100	-1.5	N/A
2003	66,704	-7.5	N/A
2004	56,375	-15.5	N/A



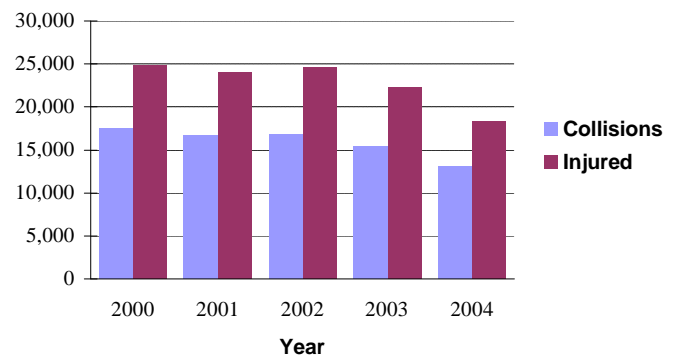
Fatal Collisions and Persons Killed

Year	Collisions	% Change	Killed
2000	61	-28.2	66
2001	52	-14.8	56
2002	91	75.0	97
2003	72	-20.9	74
2004	60	-16.7	66



Injury Collisions and Persons Injured

Year	Collisions	% Change	Injured
2000	17,458	4.5	24,867
2001	16,726	-4.2	24,103
2002	16,894	1.0	24,636
2003	15,384	-8.9	22,318
2004	13,093	-14.9	18,409

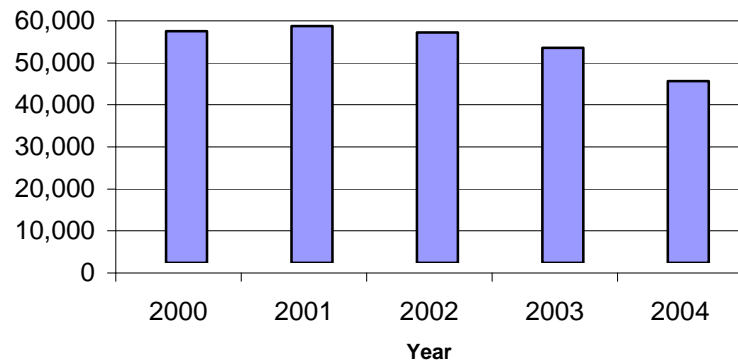


General Note: 2004 statistics are unofficial as Toronto Traffic Data Centre and Safety Bureau has not yet officially released them as of press time. However, any variances to these figures will be minimal.

*Source for all figures: Toronto Traffic Data Centre and Safety Bureau

Property Damage Collisions

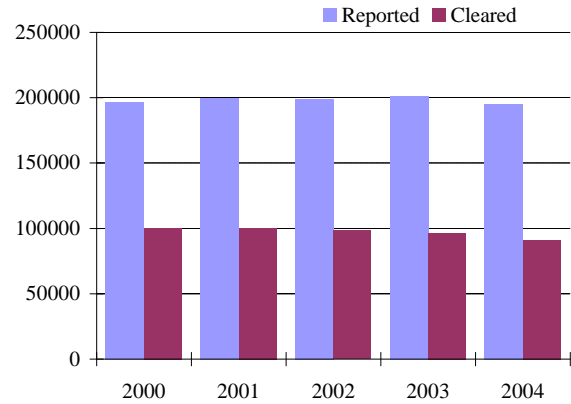
Year	Collisions	% Change
2000	55,076	32.1
2001	56,399	2.4
2002	54,830	-2.8
2003	51,227	-6.6
2004	43,221	-15.6



General Note: 2004 statistics are unofficial as the Toronto Traffic Data Centre and Safety Bureau has not yet officially released them as of press time. However, any variances to these figures will be minimal.

Total Criminal Code Offences*

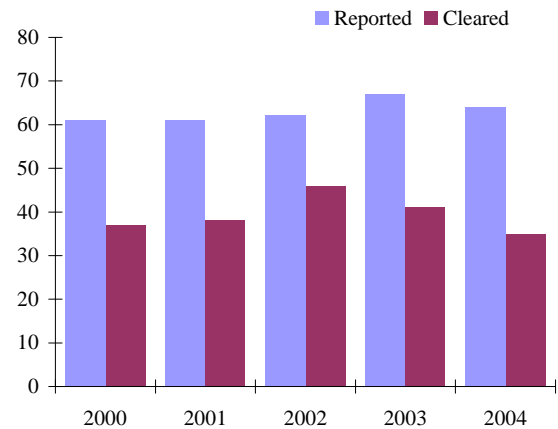
Year	Reported	% Change	Rate per 100,000 of Population	Cleared	% Cleared
2000	196933	-0.3	7,676.0	100372	51.0
2001	200082	1.6	7,712.7	100501	50.2
2002	199150	-0.5	7,605.2	98447	49.4
2003	201237	1.0	7,611.5	96454	47.9
2004	195121	-3.0	7,308.1	90874	46.6



*Excluding Criminal Code traffic offences. Statistical Reports published prior to 1997 included Criminal Code traffic offences. Figures were revised for years 2000 - 2002.

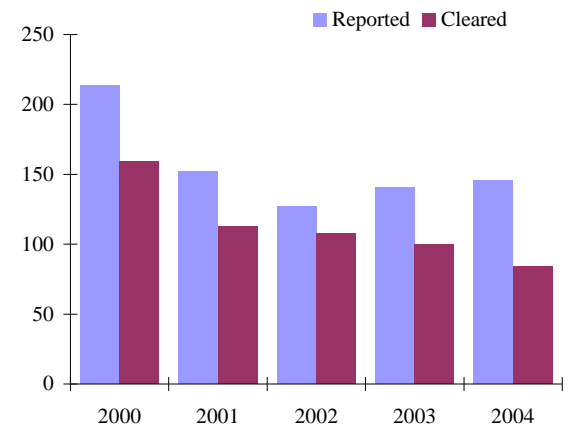
Homicides

Year	Reported	% Change	Rate per 100,000 of Population	Cleared	% Cleared
2000	61	24.5	2.4	37	60.7
2001	61	0.0	2.4	38	62.3
2002	62	1.6	2.4	46	74.2
2003	67	8.1	2.5	41	61.2
2004	64	-4.5	2.4	35	54.7



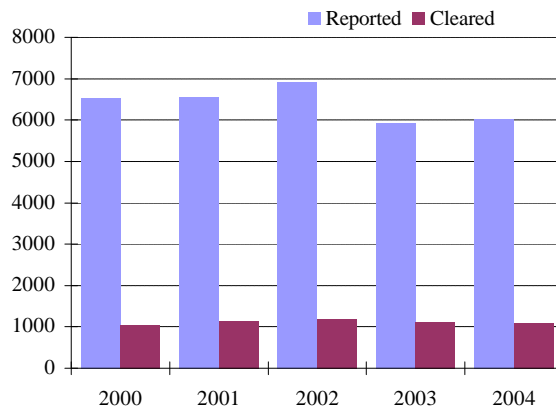
Robberies (Financial Institutions only)

Year	Reported	% Change	Rate per 100,000 of Population	Cleared	% Cleared
2000	214	-30.3	8.3	159	74.3
2001	152	-29.0	5.9	113	74.3
2002	127	-16.4	4.8	108	85.0
2003	141	11.0	5.3	100	70.9
2004	146	3.5	5.5	84	57.5



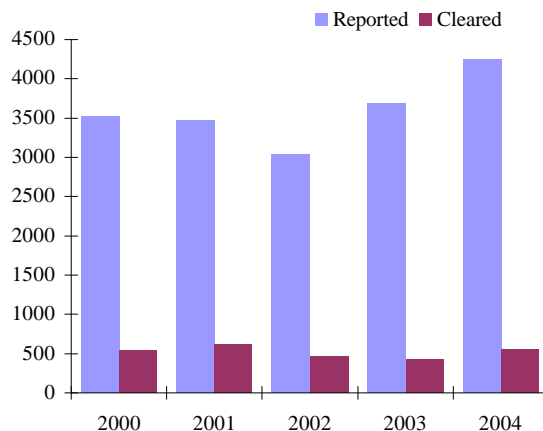
Break and Enter - Houses

Year	Reported	% Change	Rate per 100,000 of Population	Cleared	% Cleared
2000	6526	-19.1	254.4	1042	16.0
2001	6549	0.4	252.4	1146	17.5
2002	6902	5.4	263.6	1193	17.3
2003	5914	-14.3	223.7	1097	18.5
2004	6014	1.7	225.2	1089	18.1



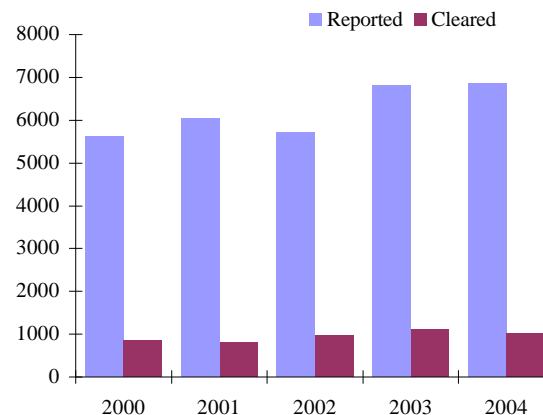
Break and Enter - Apartments

Year	Reported	% Change	Rate per 100,000 of Population	Cleared	% Cleared
2000	3525	6.0	137.4	546	15.5
2001	3482	-1.2	134.2	624	17.9
2002	3051	-12.4	116.5	466	15.3
2003	3694	21.1	139.7	433	11.7
2004	4248	15.0	159.1	554	13.0



Break and Enter - Business Premises

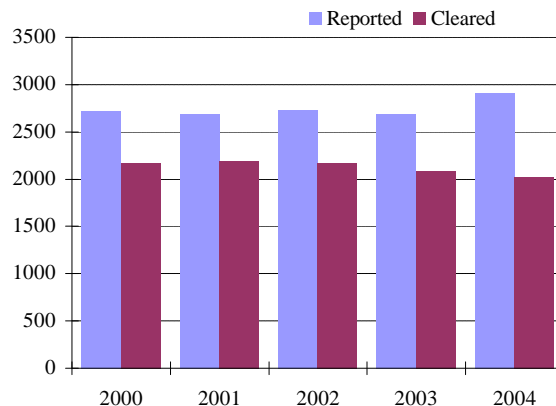
Year	Reported	% Change	Rate per 100,000 of Population	Cleared	% Cleared
2000	5637	-8.9	219.7	850	15.1
2001	6063	7.6	233.7	820	13.5
2002	5717	-5.7	218.3	983	17.2
2003	6818	19.3	257.9	1116	16.4
2004	6865	0.7	257.1	1037	15.1



*The Break and Enter breakdown does not include 29 Occurrences where the premise type was not identified.

Sexual Assaults*

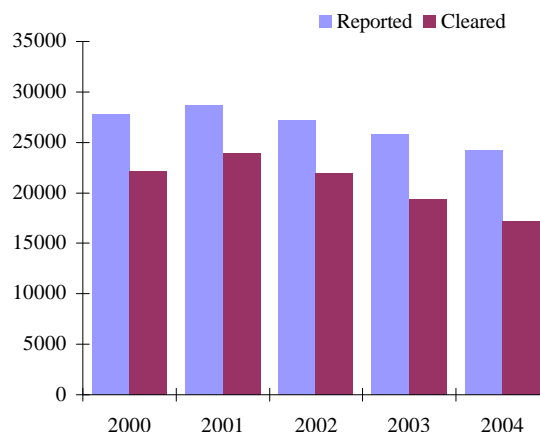
Year	Reported	% Change	Rate per 100,000 of Population	Cleared	% Cleared
2000	2714	1.5	105.8	2163	79.7
2001	2688	-1.0	103.6	2192	81.5
2002	2731	1.6	104.3	2163	79.2
2003	2680	-1.9	101.4	2075	77.4
2004	2902	8.3	108.7	2023	69.7



* Includes "non-assaultive" sexual offences(e.g. Invitation to Sexual Touching; Sexual Exploitation etc.)

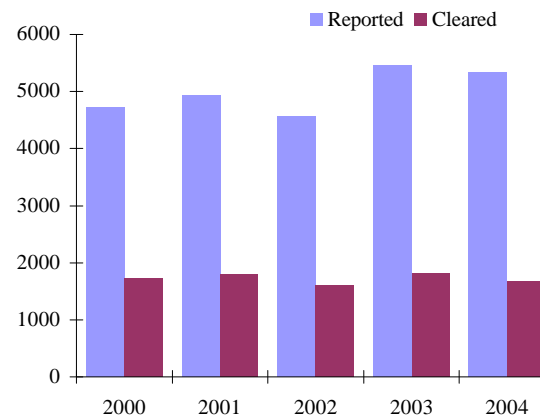
Non-Sexual Assaults

Year	Reported	% Change	Rate per 100,000 of Population	Cleared	% Cleared
2000	27814	12.4	1,084.1	22124	79.5
2001	28717	3.2	1,107.0	23952	83.4
2002	27216	-5.2	1,039.3	21990	80.8
2003	25831	-5.1	977.0	19328	74.8
2004	24307	-5.9	910.4	17234	70.9



Robberies (Including financial institution)

Year	Reported	% Change	Rate per 100,000 of Population	Cleared	% Cleared
2000	4733	-5.6	184.5	1734	36.6
2001	4936	4.3	190.3	1802	36.5
2002	4581	-7.2	174.9	1604	35.0
2003	5463	19.3	206.6	1829	33.5
2004	5348	-2.1	200.3	1683	31.5



VIOLENT CRIME, PROPERTY CRIME, OTHER CRIME AND CRIMINAL CODE TRAFFIC OFFENCES

Year	VIOLENT CRIME(1)			PROPERTY** CRIME(2)			OTHER** CRIME(3)			C. C. TRAFFIC OFFENCES(4)			TOTAL C. C. OFFENCES(5)		
	OFFENCE	CHANGE %	CLEAR* %	OFFENCE	CHANGE %	CLEAR* %	OFFENCE	CHANGE %	CLEAR* %	OFFENCE	CHANGE %	CLEAR* %	OFFENCE	CHANGE %	CLEAR* %
2000	35923	8.6	73.9	114796	-6.6	30.4	46214	11.1	84.3	4097	7.5	99.5	201,030	-0.2	52.0
2001	37049	3.1	76.9	117023	1.9	27.9	46010	-0.4	85.5	4813	17.5	98.9	204,895	1.9	51.4
2002	35183	-5.0	74.7	117709	0.6	28.1	46258	0.5	84.5	4623	-3.9	99.0	203,773	-0.5	50.6
2003	34669	-1.5	68.6	119610	1.6	28.7	46958	1.5	81.7	4416	-4.5	98.0	205,653	0.9	49.0
2004	33200	-4.2	64.5	114491	-4.3	29.4	47430	1.0	75.5	4351	-1.5	98.4	199,472	-3.0	47.7

* Clearance rate

** 'Mischief' offences are included under 'Property Crime'. For the purposes of other reports, 'mischief' offences may be included under 'Other Criminal Code'.

Categories of Crime:

- (1) **Violent crime** includes homicide and homicide related offences, sexual assaults, sexual offences, non-sexual assaults, abduction, and robberies.
- (2) **Property crime** includes break and enter, all types of thefts, possession of stolen goods, fraud and mischief.
- (3) **Other crime** includes all other non-traffic Criminal Code offences not covered in categories (1) and (2).
- (4) **C. C. Traffic offences** include all Criminal Code traffic offences excluding criminal code 'Fail to Remain' traffic offences.
- (5) **Total C. C. offences** include all the above four categories. Only Criminal Code offences are shown.

VIOLENT CRIME, PROPERTY CRIME, OTHER CRIME AND CRIMINAL CODE TRAFFIC OFFENCES

UNIT	VIOLENT CRIME(1)			PROPERTY* CRIME(2)			OTHER* CRIME(3)			C. C. TRAFFIC OFFENCES(4)			TOTAL C. C. OFFENCES(5)		
	OFFENCE	RATE*	CLEAR %	OFFENCE	RATE*	CLEAR %	OFFENCE	RATE*	CLEAR %	OFFENCE	RATE*	CLEAR %	OFFENCE	RATE*	CLEAR %
D11	1100	1,076	67.8	3856	3,771	22.8	1521	1,487	83.4	229	224	100.0	6,706	6,557	46.6
D12	1669	1,690	68.7	3929	3,979	31.2	2187	2,215	85.4	266	269	100.0	8,051	8,154	56.0
D13	1540	1,075	71.0	4364	3,047	26.1	2000	1,396	82.3	153	107	98.7	8,057	5,625	50.0
D14	2892	1,860	66.0	9268	5,961	24.8	2862	1,841	80.5	371	239	98.7	15,393	9,900	44.7
D51	2169	2,387	66.1	7071	7,782	32.8	3040	3,346	85.5	197	217	98.5	12,477	13,732	52.5
D52	1807	5,515	66.1	8933	27,263	32.4	6398	19,526	67.2	150	458	99.3	17,288	52,762	49.4
D53	1360	773	70.9	7326	4,163	24.5	1399	795	76.0	150	85	98.0	10,235	5,816	38.8
D54	1567	1,105	68.5	4270	3,010	25.8	2021	1,425	76.6	222	156	99.1	8,080	5,695	48.8
D55	2047	1,688	67.2	6827	5,631	38.8	2071	1,708	80.5	187	154	98.9	11,132	9,181	52.8
C. F. C.	16,151	1,520	67.7	55,844	5,256	29.2	23,499	2,212	77.7	1,925	181	99.1	97,419	9,169	48.7
D22	1784	908	61.1	8126	4,137	27.2	2580	1,313	76.4	385	196	99.7	12,875	6,555	44.0
D23	1995	1,202	59.2	6533	3,935	34.5	2156	1,298	73.9	238	143	99.2	10,922	6,578	48.2
D31	2953	1,511	66.3	7067	3,616	26.1	4104	2,100	74.0	330	169	97.3	14,454	7,395	49.5
D32	1875	864	61.8	8543	3,935	28.6	3073	1,416	67.3	270	124	97.8	13,761	6,339	43.1
D33	1233	634	70.6	6039	3,103	29.7	1735	892	73.4	201	103	97.0	9,208	4,732	44.9
D41	3102	1,257	61.8	10147	4,110	32.1	4979	2,017	73.6	422	171	96.7	18,650	7,555	49.6
D42	3831	980	56.4	10812	2,765	25.7	4696	1,201	73.8	523	134	97.7	19,862	5,079	44.9
A. F. C.	16,773	1,043	61.6	57,267	3,562	29.0	23,323	1,451	73.2	2,369	147	97.9	99,732	6,204	46.4
NSA	276		54.3	1,380		53.5	608			57		96.5	2,321		62.0
Toronto	33,200	1,243	64.5	114,491	4,288	29.4	47,430	1,776	75.5	4,351	163	98.4	199,472	7,471	47.7

NSA-Not Specified Area

Categories of Crime:

- (1) **Violent crime** includes homicide and homicide related offences, sexual assaults, sexual offences, non-sexual assaults, abduction, and robberies.
- (2) **Property crime** includes break and enter, all types of thefts, possession of stolen goods, fraud, and mischief.
- (3) **Other crime** includes all other non-traffic Criminal Code offences not covered in categories (1) and (2).
- (4) **C. C. Traffic offences** include all Criminal Code traffic offences excluding criminal code 'Fail to Remain' traffic offences.
- (5) **Total C. C. offences** include all the above four categories. Only Criminal Code offences are shown.

C. F. C. - Central Field Command, **A. F. C.** - Area Field Command

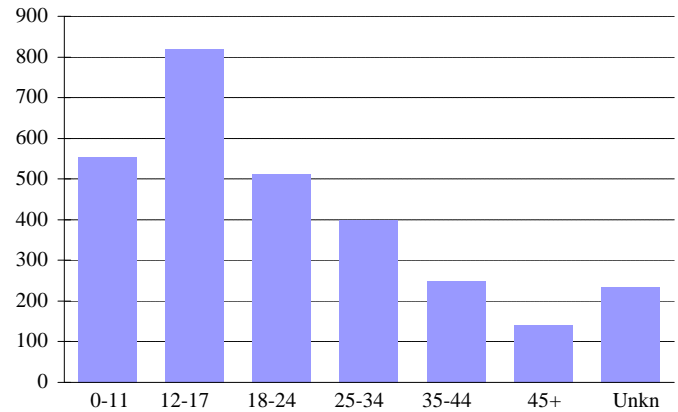
* **Rate per 100,000 of population**
No allowance was given to transient or commuting population.

* 'Mischief' offences are included under 'Property Crime'. For the purposes of other reports, 'mischief' offences may be included under 'Other Criminal Code'.

Sexual Assaults*

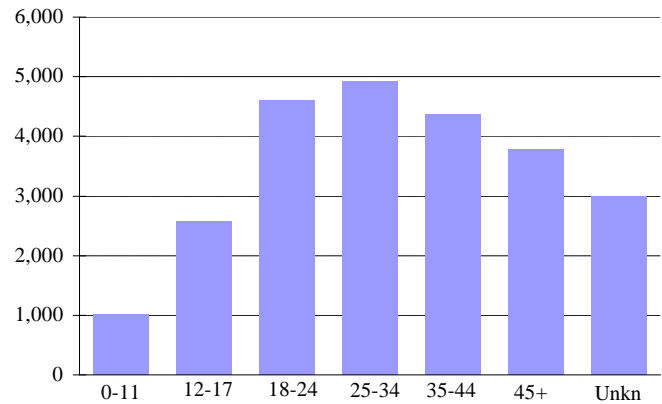
Age	Males	Females	Unknown	Total	% of Total
0-11	160	391	1	552	19.02
12-17	69	746	3	818	28.19
18-24	35	476	1	512	17.64
25-34	27	371	0	398	13.71
35-44	23	221	3	247	8.51
45+	8	131	1	140	4.82
Unkn	19	47	169	235	8.10
Total	341	2,383	178	2,902	100.00

* Includes "non-assaultive" sexual offences(e.g. Invitation to Sexual Touching; Sexual Exploitation etc.)



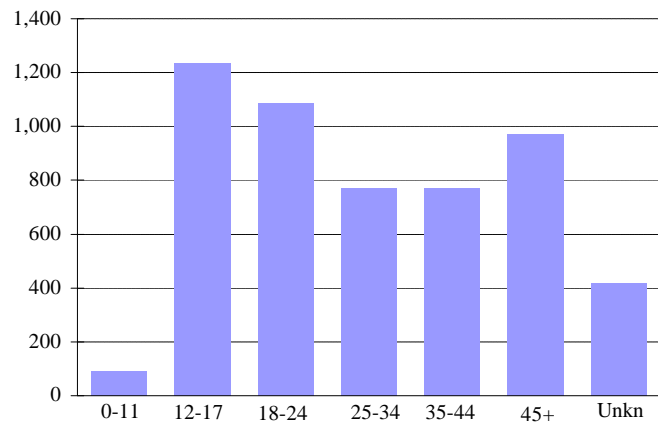
Non-Sexual Assaults

Age	Males	Females	Unknown	Total	% of Total
0-11	655	293	71	1,019	4.19
12-17	1396	1186	9	2,591	10.66
18-24	2065	2530	17	4,612	18.97
25-34	2292	2620	12	4,924	20.26
35-44	2166	2193	14	4,373	17.99
45+	2,092	1,690	4	3,786	15.58
Unkn	1,827	610	565	3,002	12.35
Total	12,493	11,122	692	24,307	100.00



Robberies

Age	Males	Females	Unknown	Total	% of Total
0-11	62	28	2	92	1.72
12-17	1035	195	7	1,237	23.13
18-24	738	341	8	1,087	20.33
25-34	536	234	2	772	14.44
35-44	528	241		769	14.38
45+	584	387	2	973	18.19
Unkn	128	62	228	418	7.82
Total	3,611	1,488	249	5,348	100.00

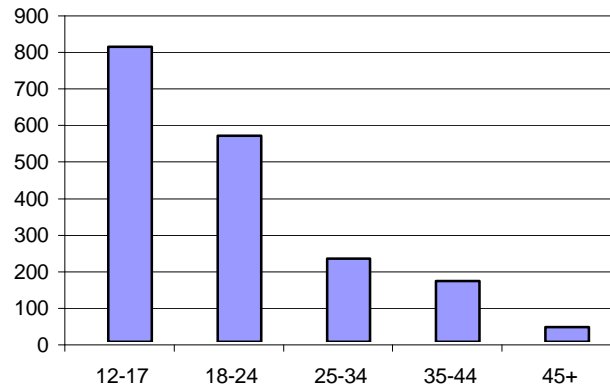


Persons Charged by Age and Sex

TPS 2004 Statistical Report

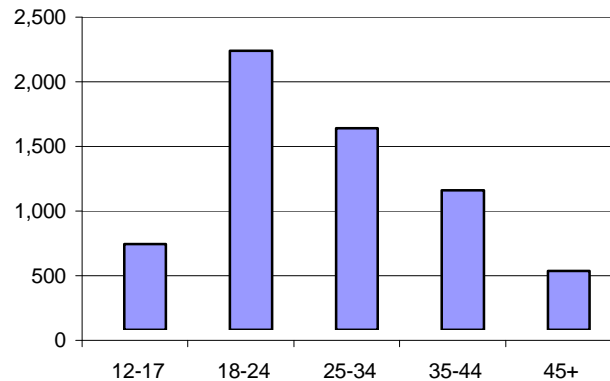
Robberies

Age	Males	Females	Total	% of Total
12-17	694	114	808	44.76
18-24	515	49	564	31.25
25-34	196	31	227	12.58
35-44	147	19	166	9.20
45+	39	1	40	2.22
Total	1,591	214	1,805	100.00



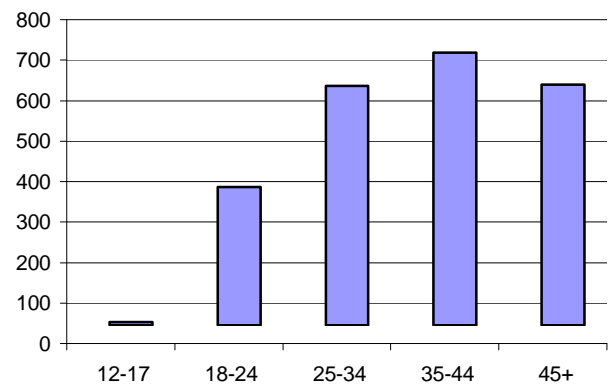
Controlled Drugs and Substances Act

Age	Males	Females	Total	% of Total
12-17	599	66	665	11.23
18-24	1,943	217	2,160	36.49
25-34	1,358	199	1,557	26.30
35-44	921	160	1,081	18.26
45+	400	57	457	7.72
Total	5,221	699	5,920	100.00



Drinking and Driving Offences

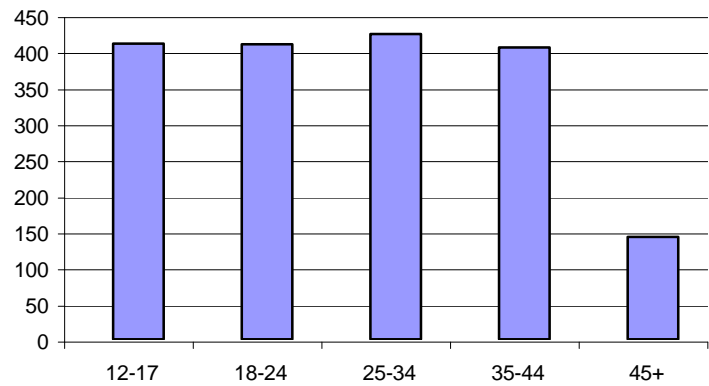
Age	Males	Females	Total	% of Total
12-17	6	2	8	0.36
18-24	309	33	342	15.47
25-34	539	53	592	26.78
35-44	620	54	674	30.48
45+	537	58	595	26.91
Total	2,011	200	2,211	100.00



Persons Charged by Age and Sex

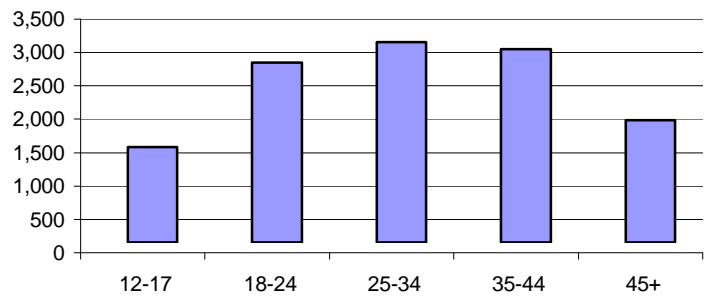
Break and Enters

Age	Males	Females	Total	% of Total
12-17	379	31	410	22.92
18-24	381	28	409	22.86
25-34	390	33	423	23.64
35-44	370	35	405	22.64
45+	129	13	142	7.94
Total	1,649	140	1,789	100.00



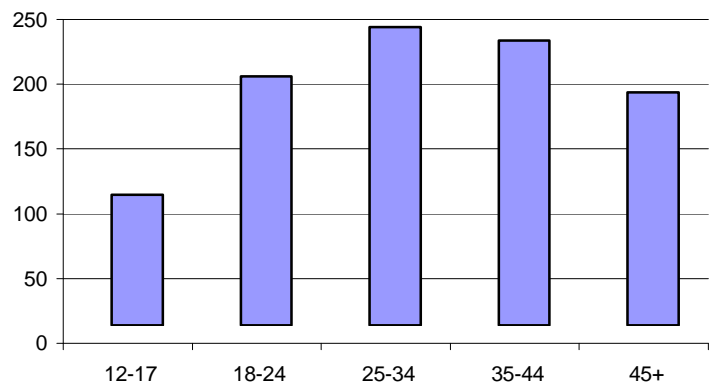
Non-Sexual Assaults

Age	Males	Females	Total	% of Total
12-17	1,046	378	1,424	12.02
18-24	2,258	434	2,692	22.72
25-34	2,506	495	3,001	25.33
35-44	2,436	458	2,894	24.43
45+	1,607	229	1,836	15.50
Total	9,853	1,994	11,847	100.00



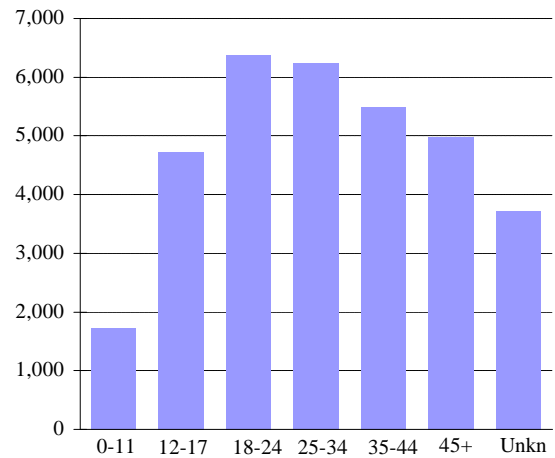
Sexual Assaults

Age	Males	Females	Total	% of Total
12-17	99	2	101	10.94
18-24	189	3	192	20.80
25-34	227	3	230	24.92
35-44	218	2	220	23.84
45+	179	1	180	19.50
Total	912	11	923	100.00



Violent Crime*

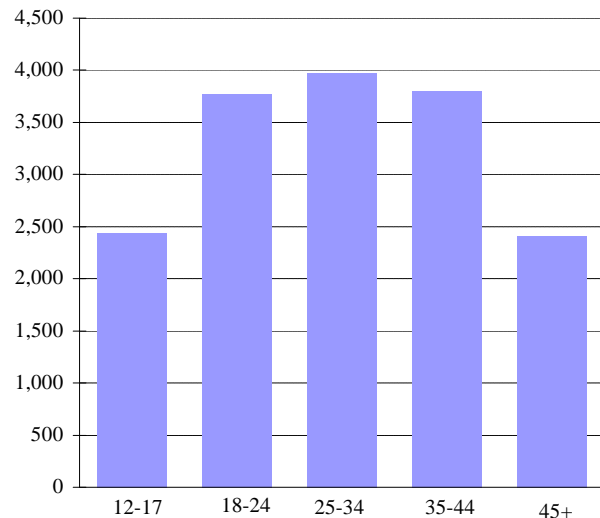
Age	Males	Females	Unknown	Total	% of Total
0-11	897	746	72	1,715	5.17
12-17	2,522	2165	19	4,706	14.17
18-24	2,909	3444	27	6,380	19.22
25-34	2,908	3303	14	6,225	18.75
35-44	2,756	2709	19	5,484	16.52
45+	2,721	2242	9	4,972	14.98
Unkn	2,001	744	973	3,718	11.20
Total	16,714	15,353	1,133	33,200	100.00



* **Violent crime** includes homicide and homicide related offences, sexual assaults, sexual offences, non-sexual assaults, abduction, and robberies.

Persons charged for violent crime

Age	Males	Females	Total	% of Total
12-17	1,915	521	2,436	14.88
18-24	3,235	532	3,767	23.01
25-34	3,360	606	3,966	24.23
35-44	3,241	555	3,796	23.19
45+	2,143	263	2,406	14.70
Total	13,894	2,477	16,371	100.00



☞ These are violent offences against persons and not the number of persons(victims).
A person can be a victim of more than one offence.

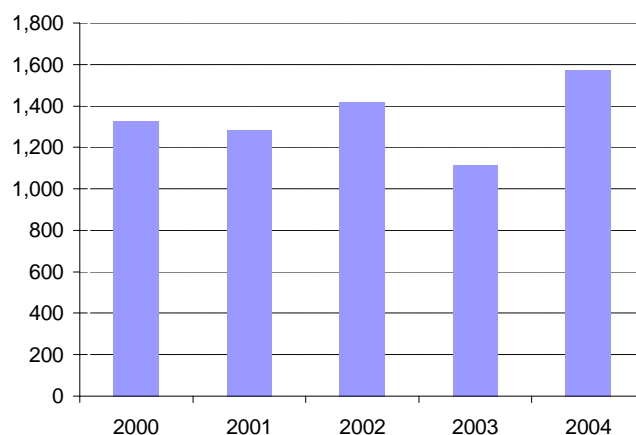
Selected Offences Against Police Officers

TPS 2004 Statistical Report

	2000	2001	2002	2003	2004
Attempted Murder	2	5	4	2	3
Aggravated Assault	4	7	5	4	8
Assault With Weapon or Causing Bodily Harm	103	95	94	72	75
Assault	105	94	74	65	139
Assault Police Officer	582	598	673	557	747
Assault to Resist Arrest	531	482	566	414	598
Dangerous operation of a motor vehicle causing bodily harm	4	1	4	2	2
Total Offences	1,327	1,281	1,416	1,114	1,572

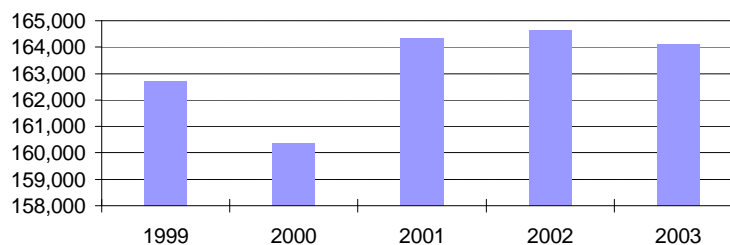
Selected Offences Against Police Officers

Year	No: of Offences
2000	1,327
2001	1,281
2002	1,416
2003	1,114
2004	1,572



Incidents as Reported to Statistics Canada*

Year	Incidents
1999	162,726
2000	160,349
2001	164,353
2002	164,670
2003	164,115



* Total Criminal Code(C.C.), excluding C. C. Traffic incidents.
 Value for 2004 is not available from Statistics Canada at press time;
 the 2005 annual report will contain this information.

Criminal Code Offences Reported and Cleared*- Field Command and Toronto Totals

First Degree Murder	Second Degree Murder	Manslaughter	Attempted Murder	Sexual Assault +	Other Assault	Robbery	Break and Enter	Theft of Motor Vehicle**	Theft Over \$5,000	Theft Under \$5,000	Fraud	Offensive Weapons offences	Other Criminal Code	Total Criminal Code Non-Traffic	Criminal Code Traffic	Total Criminal Code
---------------------	----------------------	--------------	------------------	------------------	---------------	---------	-----------------	--------------------------	--------------------	---------------------	-------	----------------------------	---------------------	---------------------------------	-----------------------	---------------------

Central Field Command

19	8	1	49	1,177	12,050	2,439	8,663	3,357	1,119	26,390	5,029	2,547	32,646	95,494	1,925	97,419
Cleared	9	1	39	770	8,885	853	1,650	475	250	5,778	2,770	2,432	21,579	45,498	1,907	47,405
% Cleared	47.4	87.5	100.0	79.6	73.7	35.0	19.0	14.1	22.3	21.9	55.1	95.5	66.1	47.6	99.1	48.7

Area Field Command

28	7	1	83	1,146	12,123	2,894	8,462	6,828	1,374	23,276	6,893	2,793	31,465	97,363	2,369	99,732
Cleared	12	1	51	759	8,279	815	1,010	633	209	6,149	3,969	2,633	19,474	43,999	2,319	46,318
% Cleared	42.9	71.4	100.0	66.2	68.3	28.3	11.9	9.3	15.2	26.4	57.6	94.3	61.9	45.2	97.9	46.4

Unknown Patrol Area

0	0	0	1	86	134	25	31	63	51	321	706	146	700	2,264	57	2,321
Cleared	0	0	1	44	70	15	26	36	13	70	404	137	567	1,383	55	1,438
% Cleared	0.0	0.0	100.0	51.2	52.2	60.0	83.9	57.1	25.5	21.8	57.2	93.8	81.0	61.1	96.5	62.0

Toronto Total

47	15	2	133	2,409	24,307	5,348	17,156	10,248	2,544	49,987	12,628	5,486	64,811	195,121	4,351	199,472
Cleared	21	2	91	1,573	17,234	1,683	2,680	1,144	472	11,997	7,143	5,202	41,620	90,874	4,281	95,155
% Cleared	44.7	80.0	100.0	65.3	70.9	31.5	15.6	11.2	18.6	24.0	56.6	94.8	64.2	46.6	98.4	47.7

*Statistics do not include Criminal Code 'Fail to Remain' offences.

** Sexual Assaults do not include non assaultive Sexual offences

** Includes motor cycles, snow vehicles and all attempts.

Criminal Code Offences Reported and Cleared*- Central Field Command

	First Degree Murder	Second Degree Murder	Manslaughter	Attempted Murder	Sexual Assault	Other Assault	Robbery	Break and Enter	Theft of Motor Vehicle**	Theft Over \$5,000	Theft Under \$5,000	Fraud	Offensive Weapons Offences	Other Criminal Code	Total Criminal Code Non-Traffic	Criminal Code Traffic	Total Criminal Code
11 Division	Reported	1	2	1	2	107	807	156	715	275	62	1,604	257	2,331	6,477	229	6,706
	Cleared	1	2	1	1	67	607	47	105	51	8	270	105	1,479	2,893	229	3,122
	% Cleared	100.0	100.0	100.0	50.0	62.6	75.2	30.1	14.7	18.5	12.9	16.8	40.9	63.4	44.7	100.0	46.6
12 Division	Reported	0	0	0	13	100	1,218	270	573	418	63	1,684	342	2,796	7,785	266	8,051
	Cleared	0	0	0	11	75	911	85	85	52	4	533	188	1,998	4,240	266	4,506
	% Cleared	0.0	0.0	0.0	84.6	75.0	74.8	31.5	14.8	12.4	6.3	31.7	55.0	71.5	54.5	100.0	56.0
13 Division	Reported	3	2	0	5	166	1,120	193	772	350	82	1,714	447	2,704	7,904	153	8,057
	Cleared	1	2	0	4	122	856	64	116	30	11	360	224	1,754	3,879	151	4,030
	% Cleared	33.3	100.0	0.0	80.0	73.5	76.4	33.2	15.0	8.6	13.4	21.0	50.1	64.9	49.1	98.7	50.0
14 Division	Reported	4	0	0	7	194	2,233	392	1,367	561	159	4,622	681	4,416	15,022	371	15,393
	Cleared	2	0	0	5	135	1,568	143	216	69	17	699	377	2,916	6,510	366	6,876
	% Cleared	50.0	0.0	0.0	71.4	69.6	70.2	36.5	15.8	12.3	10.7	15.1	55.4	66.0	43.3	98.7	44.7
15 Division	Reported	5	2	0	9	130	1,532	437	975	407	109	3,326	552	4,396	12,280	197	12,477
	Cleared	1	2	0	7	74	1,173	127	221	58	14	631	295	3,364	6,352	194	6,546
	% Cleared	20.0	100.0	0.0	77.8	56.9	76.6	29.1	22.7	14.3	12.8	19.0	53.4	76.5	51.7	98.5	52.5

** Include motor cycle and snow vehicle and all attempts.

† Statistics do not include Criminal Code 'Fail to Remain' offences.

Criminal Code Offences Reported and Cleared*- Central Field Command(Cont'd)

	First Degree Murder	Second Degree Murder	Manslaughter	Attempted Murder	Sexual Assault	Other Assault	Robbery	Break and Enter	Theft of Motor Vehicle**	Theft Over \$5,000	Theft Under \$5,000	Fraud	Offensive Weapons Offences	Other Criminal Code	Total Criminal Code Non-Traffic	Criminal Code Traffic	Total Criminal Code
52 Division	Reported	0	0	5	100	1,487	205	660	245	196	5,533	967	279	7,461	17,138	150	17,288
	Cleared	0	0	4	54	1,051	75	137	47	37	1,260	620	273	4,827	8,385	149	8,534
	% Cleared	0.0	0.0	80.0	54.0	70.7	36.6	20.8	19.2	18.9	22.8	64.1	97.8	64.7	48.9	99.3	49.4
53 Division	Reported	3	0	2	108	960	250	1,500	409	186	3,239	729	111	2,588	10,085	150	10,235
	Cleared	2	0	2	57	766	105	210	46	42	732	306	106	1,451	3,825	147	3,972
	% Cleared	66.7	0.0	100.0	52.8	79.8	42.0	14.0	11.2	22.6	22.6	42.0	95.5	56.1	37.9	98.0	38.8
54 Division	Reported	3	1	3	135	1,121	265	846	366	75	1,647	481	272	2,643	7,858	222	8,080
	Cleared	2	0	2	96	829	109	103	65	10	258	301	247	1,702	3,724	220	3,944
	% Cleared	66.7	0.0	66.7	71.1	74.0	41.1	12.2	17.8	13.3	15.7	62.6	90.8	64.4	47.4	99.1	48.8
55 Division	Reported	0	1	3	137	1,572	271	1,255	326	187	3,021	573	288	3,311	10,945	187	11,132
	Cleared	0	1	3	90	1,124	98	457	57	107	1,035	354	276	2,088	5,690	185	5,875
	% Cleared	0.0	100.0	100.0	65.7	71.5	36.2	36.4	17.5	57.2	34.3	61.8	95.8	63.1	52.0	98.9	52.8

** Include motor cycle and snow vehicle and all attempts.

† Statistics do not include Criminal Code 'Fail to Remain' offences.

Criminal Code Offences Reported and Cleared*- Area Field Command

TPS 2004 Statistical Report

	First Degree Murder	Second Degree Murder	Manslaughter	Attempted Murder	Sexual Assault	Other Assault	Robbery	Break and Enter	Theft of Motor Vehicle**	Theft Over \$5,000	Theft Under \$5,000	Fraud	Offensive Weapons Offences	Other Criminal Code	Total Criminal Code Non-Traffic	Criminal Code Traffic	Total Criminal Code
--	---------------------	----------------------	--------------	------------------	----------------	---------------	---------	-----------------	--------------------------	--------------------	---------------------	-------	----------------------------	---------------------	---------------------------------	-----------------------	---------------------

22 Division	Reported	1	1	0	6	110	1,345	275	1,140	838	240	3,492	782	299	3,961	12,490	385	12,875
	Cleared	0	1	0	4	68	883	102	194	123	50	771	465	277	2,337	5,275	384	5,659
	% Cleared	0.0	100.0	0.0	66.7	61.8	65.7	37.1	17.0	14.7	20.8	22.1	59.5	92.6	59.0	42.2	99.7	44.0

23 Division	Reported	5	1	0	5	135	1,393	394	678	840	226	2,738	860	248	3,161	10,684	238	10,922
	Cleared	1	1	0	1	89	891	142	138	91	49	875	516	235	2,003	5,032	236	5,268
	% Cleared	20.0	100.0	0.0	20.0	65.9	64.0	36.0	20.4	10.8	21.7	32.0	60.0	94.8	63.4	47.1	99.2	48.2

31 Division	Reported	8	3	0	19	217	2,162	418	999	1,030	141	2,733	935	469	4,990	14,124	330	14,454
	Cleared	3	1	0	8	158	1,565	111	154	71	20	594	471	433	3,250	6,839	321	7,160
	% Cleared	37.5	33.3	0.0	42.1	72.8	72.4	26.6	15.4	6.9	14.2	21.7	50.4	92.3	65.1	48.4	97.3	49.5

32 Division	Reported	1	0	0	14	127	1,388	288	1,228	891	201	3,754	1,056	260	4,283	13,491	270	13,761
	Cleared	0	0	0	12	73	942	85	133	86	32	966	609	243	2,489	5,670	264	5,934
	% Cleared	0.0	0.0	0.0	85.7	57.5	67.9	29.5	10.8	9.7	15.9	25.7	57.7	93.5	58.1	42.0	97.8	43.1* C.

*Statistics do not include Criminal Code 'Fail to Remain' offences.

Continued on next page

Criminal Code Offences Reported and Cleared*- Area Field Command(Cont'd)

	First Degree Murder	Second Degree Murder	Manslaughter	Attempted Murder	Sexual Assault	Other Assault	Robbery	Break and Enter	Theft of Motor Vehicle**	Theft Over \$5,000	Theft Under \$5,000	Fraud	Offensive Weapons Offences	Other Criminal Code	Total Criminal Code Non-Traffic	Criminal Code Traffic	Total Criminal Code
Reported	1	1	0	3	90	888	225	994	597	128	2,351	751	216	2,762	9,007	201	9,208
Cleared	0	1	0	2	64	703	78	43	61	22	640	466	211	1,646	3,937	195	4,132
%Cleared	0.0	100.0	0.0	66.7	71.1	79.2	34.7	4.3	10.2	17.2	27.2	62.1	97.7	59.6	43.7	97.0	44.9

Reported	4	0	0	7	192	2,352	467	1,555	1,154	210	4,270	1,250	497	6,270	18,228	422	18,650
Cleared	3	0	0	6	133	1,605	116	168	84	19	1,430	761	471	4,042	8,838	408	9,246
% Cleared	75.0	0.0	0.0	85.7	69.3	68.2	24.8	10.8	7.3	9.0	33.5	60.9	94.8	64.5	48.5	96.7	49.6

Reported	8	1	1	29	275	2,595	817	1,868	1,478	228	3,938	1,259	804	6,038	19,339	523	19,862
Cleared	5	1	1	18	174	1,690	181	180	117	17	873	681	763	3,707	8,408	511	8,919
% Cleared	62.5	100.0	100.0	62.1	63.3	65.1	22.2	9.6	7.9	7.5	22.2	54.1	94.9	61.4	43.5	97.7	44.9

** Include motor cycle and snow vehicle and all attempts.

†Statistics do not include Criminal Code 'Fail to Remain' offences.

Criminal Code Traffic Charges Laid - by Division

Case Unit	Dangerous Driving	Drive While Disqualified	Drive While Impaired	Fail to Remain	Over 80	Refuse Breath/ Blood/ Screen	Total Charges
D11	12	6	60	21	99	27	225
D12	27	25	83	31	98	23	287
D13	16	9	41	15	49	9	139
D14	28	13	90	21	120	22	294
D51	33	3	36	29	52	9	162
D52	16	6	36	12	43	8	121
D53	17	4	41	11	51	3	127
D54	27	12	40	24	65	16	184
D55	17	8	53	11	68	8	165
Total - Central Field	193	86	480	175	645	125	1704
D22	25	10	96	20	106	22	279
D23	29	7	63	22	84	12	217
D31	45	16	99	29	104	25	318
D32	38	27	66	25	108	17	281
D33	17	7	33	12	45	9	123
D41	42	13	152	29	182	39	457
D42	65	14	147	40	151	40	457
Total - Area Field	261	94	656	177	780	164	2132
Other_Units	23	5	6	16	4	2	56
TSV	41	14	151	33	316	38	593
Grand Total	518	199	1293	401	1745	329	4485

Charges Laid defined as all instances where a CIPS offence is linked to a specific person.
Release type not taken into account.

Charges Laid For Other Offences - by Division

	Other Offences				
	Liquor Licence Act - Drunk	Liquor Licence Act - Other	Municipal By-Laws [†]	Total†	Highway Traffic Act [‡]
11 Division	230	223	691	1,144	11,305
12 Division	114	346	435	895	12,394
13 Division	138	121	650	909	28,366
14 Division	474	937	1,236	2,647	22,924
51 Division	449	646	638	1,733	8,266
52 Division	601	1,506	1,792	3,899	11,688
53 Division	117	263	581	961	9,745
54 Division	137	154	553	844	14,940
55 Division	267	538	1,024	1,829	10,699
Central Field	2,527	4,734	7,600	14,861	130,327
22 Division	201	622	505	1,328	20,324
23 Division	162	571	391	1,124	25,921
31 Division	119	451	771	1,341	30,596
32 Division	114	245	2,180	2,539	21,927
33 Division	41	64	876	981	24,310
41 Division	162	435	1,606	2,203	25,373
42 Division	117	648	578	1,343	30,630
Area Field Command	916	3,036	6,907	10,859	179,081
Toronto	3550**	8152**	16,777**	28,460**	309,408

[‡] Excluding Highway Traffic Act.

* * Includes charges issued by other units.

*** Source CIPS

[†] Reflects the total Highway Traffic Act charges issued by divisional personnel.

The Total of the H.T.A. charges issued by divisional, traffic and other personnel was 400,635.

[‡] Reflects the total By-law charges issued by divisional personnel. The total of the By-law charges issued by all units was 19,002.

Persons Charged With Criminal Code Offences and Other Federal Statutes*

	Murder **	Attempted Murder	Sexual Assault	Other Assault	Robbery	Break & Enter	Theft Over	Theft Under	Theft Other	Fraud	Offensive Weapons	Other Criminal Code	Criminal Code Traffic	Drug	Other Federal Statutes
Young Offender	Male	9	11	99	1046	694	104	1237	900	100	748	2635	51	599	300
	Female	0	0	2	378	114	12	1035	193	46	69	534	6	66	80
	Total	9	11	101	1424	808	116	2272	1093	146	817	3169	57	665	380
Adult	Male	33	83	817	8809	897	393	5929	3553	1705	2304	18891	2520	4623	855
	Female	1	6	9	1616	100	43	3082	817	715	285	3297	236	633	171
	Total	34	89	826	10425	997	436	9011	4370	2420	2589	22188	2756	5256	1026
Grand Total	43	100	927	11849	1805	552	11283	5463	2566	3406	25357	2813	5921	1406	

* A person can be charged with multiple offences and may be included in more than one category.

(3) Persons where gender not specified excluded.

Persons where age_at_offence less than 12 excluded.

Age Defined by CIPS : Age_at_offence field.

Young Offender define as Age between 12 -17.

Persons Charged defined as all instances where a CIPS offence is linked to a specific person.

Persons Charged With Criminal Code Traffic Offences*

TPS 2004 Statistical Report

Offence Type		Dangerous Driving	Drive While Disqualified	Drive While Impaired	Fail to Remain	Over 80	Refuse Breath/ Blood/ Screen
Young Offender	Male	40	2	4	26	5	0
	Female	2	0	1	4	1	0
	Total	42	2	5	30	6	0
Adult	Male	415	162	1172	287	1571	301
	Female	32	7	102	18	162	27
	Total	447	169	1274	305	1733	328
Grand Total		489	171	1279	335	1739	328

* A person can be charged with multiple offences and may be included in more than one category.

(3) Persons where gender is not specified excluded.

Persons where age_at_offence less than 12 excluded.

Age obtained from CIPS : Age_at_offence field.

Young Offender define as Age between 12 -17.

Persons Charged defined as all instances where a CIPS offence is linked to a specific person.

Data Source: CIPS

Persons Charged by Case Unit for Criminal Code and Other Federal Statutes*

TPS 2004 Statistical Report

Case Unit	Murder**	Murder Attempted	Sexual Assault	Other Assault	Robbery	Break & Enter	Theft Over	Theft Under	Theft Other	Fraud	Offensive Weapons	Other Criminal Code	Criminal Code Traffic	Drug	Other Federal Statutes
D11	1	1	28	472	58	100	22	263	200	67	110	1082	148	201	124
D12	0	7	46	637	84	61	20	474	186	82	193	1273	162	280	169
D13	0	5	49	548	74	101	19	354	259	72	181	1181	86	317	205
D14	0	5	69	1100	131	162	29	786	360	110	286	2457	183	742	95
D22	0	3	45	641	97	97	61	584	371	183	171	1599	171	183	82
D23	0	3	56	652	109	117	68	825	338	159	177	1265	137	241	134
D31	0	10	99	973	111	125	45	570	270	192	238	1759	196	336	146
D32	0	6	55	667	69	78	31	980	384	178	122	991	178	115	47
D33	0	4	35	466	74	63	24	587	267	122	118	782	72	92	11
D41	0	10	84	1110	136	138	30	1624	565	278	272	1849	276	245	69
D42	0	20	90	1209	166	144	39	897	472	186	360	2277	269	486	72
D51	2	3	38	667	111	90	22	379	296	100	227	2064	93	830	39
D52	0	7	49	911	96	122	35	1560	512	277	214	2187	77	393	53
D53	0	3	19	380	69	81	27	481	148	108	63	566	80	79	11
D54	1	1	40	587	88	95	16	184	223	60	144	1052	119	162	38
D55	1	3	36	706	75	187	35	708	296	115	151	1408	101	269	25
INT	0	0	0	0	0	0	0	0	0	0	1	8	0	14	0
Other	0	0	2	21	2	1	5	6	25	2	36	181	14	124	71
SIS	0	3	4	12	7	15	11	6	75	33	117	281	10	123	4
Squads	38	6	50	53	245	6	10	4	188	204	223	872	11	677	5
TSV	0	0	0	14	0	0	2	6	12	9	2	112	430	12	5
Grand Total	43	100	894	11826	1802	1783	551	11278	5447	2537	3406	25246	2813	5921	1405

* A person can be charged with multiple offences and may be included in more than one category.

Persons age_at_offence less than 12 are excluded. Persons excluded where gender is not specified (3).

Persons Charged defined as all instances where a CIPS offence is linked to a specific person.