



INTRODUCTION

In 1993, the Toronto Police Service, Hate Crime Unit (HCU) of Intelligence Services began publishing statistics on hate crimes based upon reported offences. The hate crime definition used by the Service is, “a criminal offence committed against a person or property that is based upon the victim’s race, national or ethnic origin, language, colour, religion, sex, age, mental or physical disability, sexual orientation, or any other similar factor.” The bias category codes used throughout the tables and charts of this report are reflected in the legend footer below.

The HCU is responsible for reviewing all hate motivated occurrences to ensure a proper investigation is conducted. All relevant information is captured, recorded and analyzed to help determine overall trends and patterns.

It must be emphasized that while the HCU analyzes this information to determine the status of hate motivated crimes, we believe the collected data does not accurately represent the prevalence of hate bias crime. Historically, there has been a reluctance by some members of the public to report their victimization to police. Community groups play an important role by intervening and referring reluctant victims to the police. In addition, The Toronto Police Service Hate Crime Directive outlines several criteria for field officers to properly identify hate crimes. Further, the HCU continues to instruct all officers to err on the side of caution and forward all suspected hate motivated occurrences to the Hate Crime Unit for review.

The HCU continues to work closely with various community groups and front line officers to provide them with training and education. In addition, the unit provides investigative support and expert witnesses for court when required. Our main focus is the commitment and dedication to prevention, pro-active education and investigation of hate motivated offences.



METHODOLOGY of CATEGORIES

The Service's Hate Crime Directive (05-16) requires all suspected hate motivated occurrences to be reviewed by the HCU to ensure proper identification. In addition, the unit gathers criminal intelligence on hate groups and/or individual hate mongers, including their criminal activities.

Each occurrence is classified using the categories within the Hate Crime definition (see legend below). Comments and/or actions of the suspect during the incident are significant in helping to determine the suspect's motive and the type of bias. However, it is sometimes difficult to categorize these occurrences. At this point we rely on several factors including the victim's perception of the incident and a self-account of the identifiable group they belong to.

In cases where visible minorities are victims, the suspects are often unaware of the victim's actual background, and the victim is then "lumped" into a category by the suspect based on their preconceived bias. The victim is targeted because of an obvious visible difference. For example, a person of East Indian decent from Guyana, when confronted with hate bias may be called a racial slur associated a person originating from Pakistan. In these cases the incident is classified as RACE (RA).

Occurrences which target more than one group are categorized as Multi-Bias (MU). This occurs when a suspect's comments and/or actions are directed towards several victim groups.

When a hate motivated occurrence is coded as Ethnic (ET) the suspect and victim are from the same country but different ethnic backgrounds, or the suspect is able to distinguish the different ethnic groups from a specific country.

The Nationality (NA) category is used when a victim is targeted specifically because of their Nationality and not their country of origin or physical features.



Methodology con't

Sexual Orientation offences include crimes against gay males, lesbians, trans-sexual, and trans-gender persons.

The categories of Age, Language, Disability, and Religion are usually specific and clear as to why the victims have been targeted and therefore, can be easily categorized.

Similar Factor criminal occurrences can reflect hate towards any recognizable group other than those previously discussed. This may include a particular profession or the immutable physical characteristic of a person.

HATE GROUPS

Hate groups and individual hate mongers were mainly responsible for the distribution of hate flyers, posters, voice messages, e-mails, letters and faxes. Individuals identifying themselves as members of the Ku Klux Klan, Original Canadian White Bloor Boys, The Union Committee, The Movement to Restore Decencies, and the Coalition for a Humanistic British Canada committed 29 Wilful Promotion of Hatred offences. Aryan Nations members were responsible for a Threatening and Mischief occurrence. A Nationalist Party of Canada member was arrested for a Mischief offence. Skinheads were responsible in three (3) separate assault occurrences. Investigations are continuing on these matters.



OVERVIEW

A total of 292 hate bias criminal offences were reported to Toronto Police Service Hate Crime Unit in 1999. This reflects a 28% increase from the 1998 figure of 228. The offences of Wilful Promotion of Hatred and Mischief show significant increases. There was also a marked increase in reporting from Toronto Transit Commission, from 15 occurrences in 1998 to 36 reported in 1999. The majority of these occurrences were Mischief to Property (i.e. Graffiti).

The HCU, believes this increase is directly attributed to increased awareness of hate crimes by the police and community. The Hate Crime Unit continues it's focus on training uniform officers to recognize hate crimes and educating the public to encourage reporting. The dedication of community organizations with outreach hotlines has also assisted the public in reporting incidents that they would otherwise not report.

1999 OFFENCE BREAKDOWN BY CATEGORY

OFFENCE	AG	DI	ET	GE	LN	MU	NA	RA	RE	SF	SO	TTL
Advocate Genocide			1						1			2
Assault		1	1			5	10	35	2	2	19	75
Bomb Threat								1				1
Break & Enter								1				1
Cause Disturbance						1						1
Criminal Harassment				2		4	2	7	4	2	3	24
Harassing Phone Call			1					2				3
Mischief						21	4	28	16		7	76
Robbery								2			3	5
Sexual Assault								1				1
Theft											1	1
Threat			2			4	5	19	7	1	11	49
W/Promotion Hatred						28		17	8			53
TOTAL	0	1	5	2	0	63	21	113	38	5	44	292

Bias Category Legend

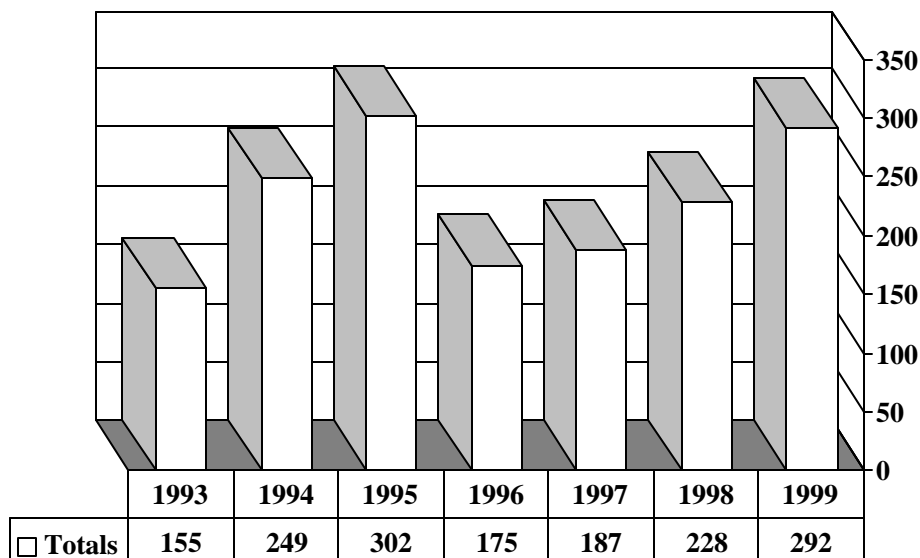
4

*AG-Age, DI-Disability, ET-Ethnicity, GE-Gender, LN-Language, MU-Multi-Bias, NA-Nationality
 RA-Race/Colour, RE-Religion, SF-Similar Factor, SO-Sexual Orientation*





Reported Hate Crime Occurrences 1993 - 1999 Comparisons



YEAR	1994	1995	1996	1997	1998	1999
Percentage Increase/Decrease	61%+	21%+	42%-	7%+	22%+	28%+

TOTAL HATE CRIMES

YEAR	AG	DI	ET	GE	LN	MU	NA	RA	RE	SF	SO	TOTAL
1993			8					77	54		16	155
1994		2	6				17	155	58		11	249
1995			10	1		32	23	164	50		22	302
1996			9			8	7	101	32		18	175
1997			5		1	18	16	97	34		16	187
1998		1	3	2		33	34	92	32		31	228
1999		1	5	2		63	21	113	38	5	44	292
TOTAL		4	46	5	1	154	118	799	298	5	158	1,588

In 1993 Nationality and Ethnicity was combined under Ethnicity
 In 1993 & 1994 Race and Multi-Bias was combined under Race

Bias Category Legend

*AG-Age, DI-Disability, ET-Ethnicity, GE-Gender, LN-Language, MU-Multi-Bias, NA-Nationality
 RA-Race/Colour, RE-Religion, SF-Similar Factor, SO-Sexual Orientation*



AG–Not reported to date



PATTERNS OF HATE MOTIVATED OFFENCES

In 1999, the most frequent hate bias occurrences were Mischief (76), Assaults (75), Wilful Promotion of Hatred (53), Threats (49) and Criminal Harassment (24). As in previous reports, most offences occurred in public locations and were committed by suspects unknown to the victim.

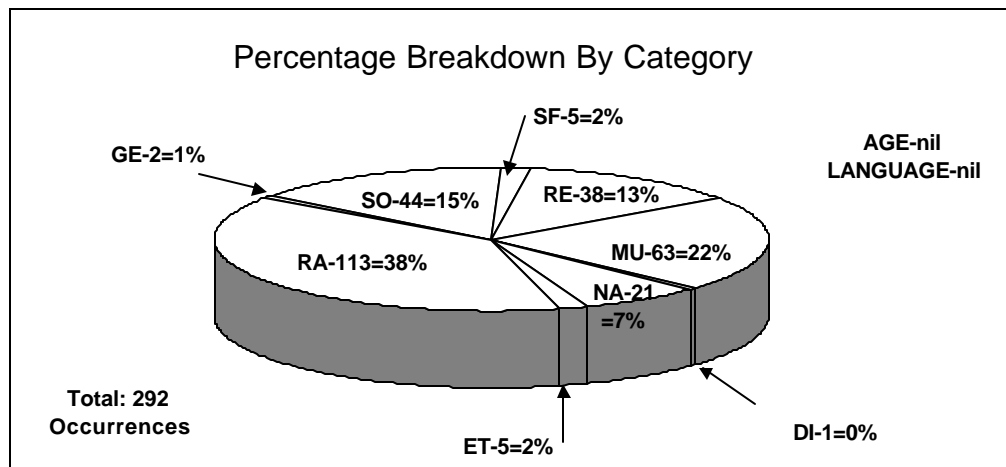
Mischief offences consisted mainly of graffiti and flyers posted and/or distributed in public locations. Common targets included Toronto Transit Commission property, schools, education offices and apartment buildings, with a large number occurring in public locations i.e. utility poles etc.

Assaults and threats were usually unprovoked attacks. They typically occurred in the victim's environment: their neighbourhood, school, transit route and occasionally, their place of employment.

Hate groups and individual hate mongers were responsible for the majority of Wilful Promotion of Hatred offences.

Most Criminal Harassment offences were committed by voice-mail, e-mail, or fax messages.

PATTERNS OF VICTIM GROUPS



Bias Category Legend

AG-Age, DI-Disability, ET-Ethnicity, GE-Gender, LN-Language, MU-Multi-Bias, NA-Nationality
 RA-Race/Colour, RE-Religion, SF-Similar Factor, SO-Sexual Orientation



Patterns of Hate Motivated Offences con't.

Consistent with previous reports, the group most targeted remains the Race category at 38% (113 occurrences), followed by Multi-Bias at 22% (63 occurrences), Sexual Orientation at 15% (44 occurrences) and Religion with 13% (38 occurrences) offences.

As in previous years, hate motivated crimes against visible minorities accounted for the highest number of occurrences. Some of the contributing factors for these unprovoked offences include the offender's perception of the victim as a threat to their way of life, their community or their employment opportunities. In the majority of cases, there were no precipitating events to initiate the attack. The motivation is often the suspect's personal bias, which contributed to criminal action. Often the suspects have no prior history of criminal behaviour.

In the Race category, members of the Black community (73) were the main target group, followed by Multi-Bias (63), anti-Pakistani (18) and anti-White (17).

The Multi-Bias category had 63 occurrences substantiating the fact that prime victims of hate motivated crimes are visible minorities. The majority of occurrences consisted of graffiti and flyers posted and/or distributed in public locations.

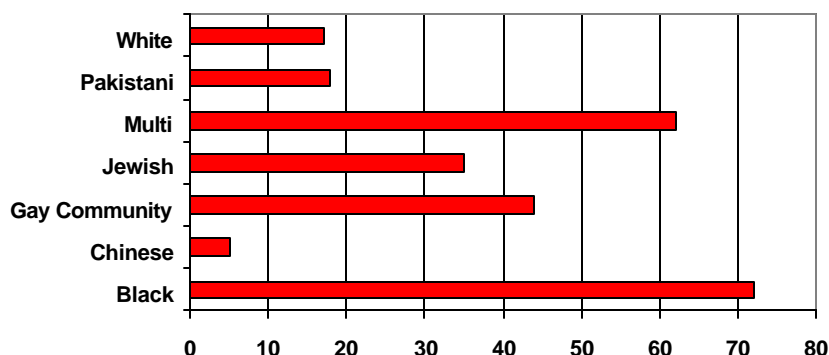
Almost all religious offences were anti-Semitic. This has been consistent since 1993.

Offences against gay males were the highest in the Sexual Orientation category. The majority of these were assaults and threats. Almost all occurred in public locations.

While physical and verbal abuse were prevalent in most occurrences, weapons were used in 23 incidents. The types of weapons included the use of baseball bats, broken beer bottles, knives, a metal crow bar, a stick, and a screwdriver. Almost all these weapons offences were assaults.



VICTIMIZED GROUPS IN 1999



Other victim groups who reported less than 5 occurrences are listed below.

Aboriginal	1	Abortion Issues	2	Albanian	1	Black	73
Visually Impaired	1	Bombay	1	Canadian	1	Chinese	5
Christian	3	East Indian	1	Female	2	Gay Community	3
Gay Males	32	Lesbian	7	Greek	1	Hispanic	1
Iranian	1	Iraq	1	Irish	1	Japanese	2
Jewish	35	German	1	Multi-Bias	63	Newfoundland	1
Pakistani	18	Police	3	Polish	3	Punjabi	1
Serbian	2	Somalian	2	Transgender	2	Trinidad	1
Turkish	1	Ukrainian	2	White	17	TOTAL	292

ACCUSED/SUSPECT IDENTIFICATION

(Provided by Victims - Approximate Age Group)

Age Range 11-17			Age Range 18-25			Age Range 26-40			Over 40		
M	F	Group	M	F	Group	M	F	Group	M	F	Group
8	1	3	11	2	14	37	6	9	30	3	2

Male - Unk/Age	Female - Unk/Age	Group Attacks - Unk/Age
19	16	9

According to victim's description, males in the age range 26-40 committed the majority of offences. These offences were mainly assaults and threats. This differs from 1998, where



18-25 year old males were prime suspects. Frequently, in occurrences where young offenders were involved, their motivation was based on ethnic polarization, territorial issues and peer pressure.

HATE BIAS CRIME OCCURRENCES BY DAY/MONTH

DAYS OF THE WEEK							
SUN	MON	TUE	WED	THU	FRI	SAT	OTHER
34	51	31	35	36	49	48	8

The occurrence breakdown by day did not reflect any particular pattern except Monday, Friday and Saturday being higher. There was no evidence of any pattern or trend.

MONTHS OF THE YEAR												
JAN	FEB	MAR	APR	MAY	JUN	JUL	AUG	SEP	OCT	NOV	DEC	OTH
18	23	26	28	16	26	20	30	29	29	27	12	8

The monthly breakdowns are comparable except for January, May, and December. Comparing the monthly data did not provide any evidence to prove the reduction during the lower months was directly attributed to any religious holiday or significant date.

The category of "Other" signifies incidents occurring over a period of time. These were usually Criminal Harassment offences.

ARREST/SENTENCING

In 1999, 49 reported hate motivated occurrences concluded with charges. Of these, 30 occurrences had multiple charges and six (6) had multiple accused. There were 20 concluded cases and 29 remain before the courts. Sentencing in the concluded cases included time served, custodial time, conditional discharges, suspended sentences, probation, and peace bonds.

CHARGES		COURT CASES		
OFFENCE	QTY	DISPOSITIONS	Y.O.	ADULTS
Assault	32	Currently before the Courts		29
Threat	12	Guilty		17
Criminal Harassment	2	Withdrawn (Peace Bond)		2
Mischief	2	Diversion (Y.O.)	1	
Cause Disturbance	1			
TOTAL	49	TOTAL	1	48

Bias Category Legend

*AG-Age, DI-Disability, ET-Ethnicity, GE-Gender, LN-Language, MU-Multi-Bias, NA-Nationality
 RA-Race/Colour, RE-Religion, SF-Similar Factor, SO-Sexual Orientation*



Mischief, Criminal Harassment and Wilful Promotion of Hatred represent a large majority of hate motivated crimes. It is difficult to identify suspects for these offences and therefore to obtain an arrest.

BREAKDOWN BY VICTIM GROUP AND OFFENCE

BIAS	VICTIM	NUMBER & TYPE OF OFFENCES	BIAS	VICTIM	NUMBER & TYPE OF OFFENCES
DI 1	Visually Impaired	<u>1 Assault</u>	ET 5	Albanian Serbian X 2 Sicilian Somalia	<u>1 Advocate Genocide</u> <u>1 Assault, 1 Har/Phone Call</u> <u>1Threat (Death)</u> 1 Threat
GE 2	Female X 2	<u>2 Criminal Harassment</u>	MU 63	Multi -Bias	5 Assault, 4 Threat 1 Cause Disturbance 4 Criminal Harassment 21 Mischief, 28 Wilful Promotion Hate
NA 21	Bombay Canadian Chinese X 2 East Indian German Greek Iranian Irish Japanese X 2 Newfoundland Pakistani Polish X 3 Punjabi Somalian Turkish Ukrainian X 2	<u>1 Threat</u> <u>1 Mischief</u> <u>2 Assault,</u> <u>1 Threat</u> <u>1 Assault</u> <u>1 Threat</u> <u>1 Assault</u> <u>1 Threat</u> <u>1 Assault, 1 Mischief,</u> <u>1 Assault</u> <u>1 Assault</u> 1 Assault, 1 Threat <u>1 Criminal Harassment</u> <u>1 Assault</u> <u>1 Mischief</u> <u>1 Assault</u> 1 Criminal Harassment 1 Mischief	RA 113	Aboriginal Black X 72 Chinese X 3 Hispanic Iraq Pakistani X 17 Trinidad White X 17	<u>1 Mischief</u> 28 Assaults, 8 Mischief 6 Criminal Harassment 1 Harassing Phone Call 15 Threats, <u>14 Wilful Promotion Hate</u> 1 Break & Enter <u>1 Mischief, 1 Threat</u> <u>1 Wilful Promotion Hate</u> <u>1 Assault</u> 4 Assault ,1 Bomb Threat 1 Harassing Phone Call 6 Mischief, 1 Robbery 1 Sexual Assault, 2 Threat <u>1 Wilful Promotion Hate</u> <u>1 Assault</u> 1 Assault, 12 Mischief 1 Criminal Harassment, 1 Threat 1 Robbery, 1 Wilful Promotion of Hate



RE 38	Christian X 3 Jewish X 35	1 Threat, 1 Mischief <u>1 Assault</u> 1 Advocate Genocide 15 Mischief, 1 Assault, 6 Threat, 4 Criminal Harassment 8 Wilful Promotion Hate	SF 5	Abortion X 2 Police X 3	<u>2 Criminal Harassment</u> 2 Assault, 1 Threat
SO 44	Gay Community X 3 Gay Male X 32 Lesbian X 7 Trans-gender X 2	<u>2 Mischief, 1 Threat,</u> 15 Assault, 9 Threat, 2 Criminal Harassment, <u>3 Mischief, 3 Robbery,</u> 2 Assault, 2 Mischief 1 Criminal Harassment <u>1 Theft, 1 Threat</u> 2 Assault	AG LN	Nil Nil	



LOCATION OF OFFENCES

QTY	Type of Location	Types of Crimes – In Sequence of Most Often Committed
45	Apartment Bldg <ul style="list-style-type: none"> ▪ Private residences ▪ Lobby ▪ Stairwells 	Mainly Mischief, Threats, Wilful Promotion of Hate & Assaults
13	Business Office <ul style="list-style-type: none"> ▪ Various types 	Mainly Mischief, Criminal Harassment
1	Commercial <ul style="list-style-type: none"> ▪ Video shop 	Bomb Threat
1	Community Centre	Assault
29	Education <ul style="list-style-type: none"> ▪ Board Office ▪ Junior & High ▪ College & University 	Mainly Mischief, Wilful Promotion of Hate & Assaults
3	Financial Institutions <ul style="list-style-type: none"> ▪ Bank ▪ Credit Union 	All Wilful Promotion of Hate
3	Gas Service Station	Threats, Assault
15	Government <ul style="list-style-type: none"> ▪ City Hall ▪ Corrections/Police ▪ Crown Office ▪ Manpower/Immigration ▪ Social Services 	Mainly Wilful Promotion of Hate
1	Hotel	Mischief
53	House/Dwelling <ul style="list-style-type: none"> ▪ Private Houses ▪ Student Residence 	Wilful Promotion Hate, Threat, Mischief, Criminal Harassment, Assault,
2	Manufacturing Plant <ul style="list-style-type: none"> ▪ Technical ▪ Metal/Tinsmith 	Wilful Promotion Hate & Threat
1	Nursing Home	Criminal Harassment
13	Organisations <ul style="list-style-type: none"> ▪ Various, including community centres 	Mainly Threats, Wilful Promotion Hate, Mischief
8	Parking Lots	Mischief, Assault, Threat
5	Public Parks	2 Assaults, Criminal Harassment, Robbery & Mischief
1	Race Track	Criminal Harassment
10	Restaurants	Assaults
5	Retail	Mischief, Threat
45	Street/Sidewalk	Mainly Assault (28), Mischief, Threats & Wilful Promotion Hate
36	Toronto Transit Commission <ul style="list-style-type: none"> ▪ Bus Shelters ▪ Street Cars ▪ Subway Stations & Trains 	Mainly Mischief to Property (22) and Assaults, Wilful Promotion Hate

Bias Category Legend

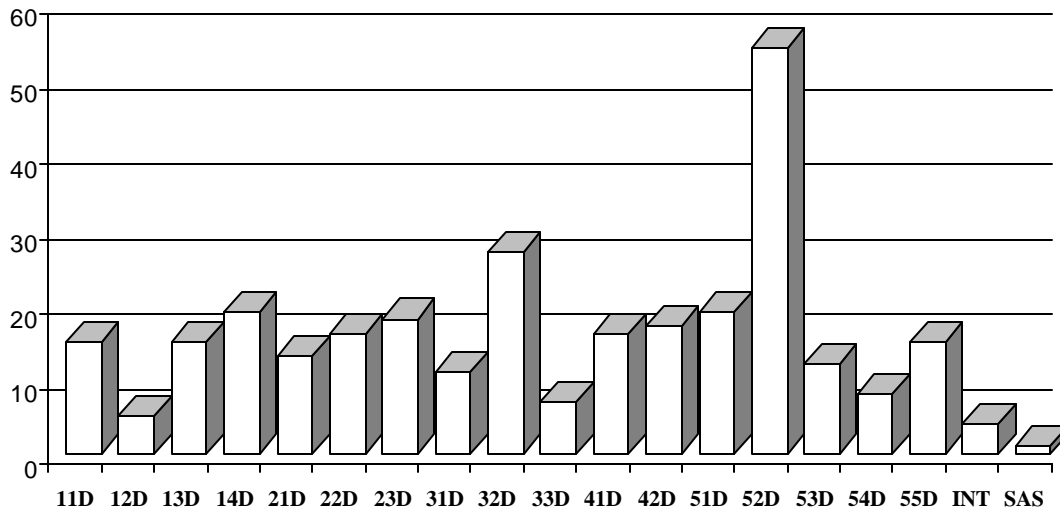
14

*AG-Age, DI-Disability, ET-Ethnicity, GE-Gender, LN-Language, MU-Multi-Bias, NA-Nationality
RA-Race/Colour, RE-Religion, SF-Similar Factor, SO-Sexual Orientation*



2	Worship ▪ Church ▪ Cemetery	Mischief
---	-----------------------------------	----------

1999 HATE BIAS OCCURRENCES BY DIVISION



BY DIVISION

11 Division - 15 Occurrences

Abortion Issues	Criminal Harassment
Black	Mischief
Black	Threat
Black	Wilful Prom/Hate
Chinese	Assault
Female	Criminal Harassment
Gay Male	Threat
Iraq	Assault
Jewish	Mischief
Multi	Mischief
Pakistani	Mischief
Pakistani	Assault
Police	Assault
Ukrainian	Criminal Harassment
White	Robbery

12 Division - 5 Occurrences

Black	2 x Wilful Prom/Hate
Police	Assault
Turkish	Assault
Visually	Assault

13 Division - 15 Occurrences

Black	Assault
Black	3 x Wilful Prom/Hate
Black	Harassing Phone Call
Black	Threat
Black	Criminal Harassment
Black	Assault



Jewish 2 x Criminal Harassment
Lesbian Mischief
Multi Willful Prom/Hate
Multi 2 x Mischief
Trinidad Assault

Chinese Assault
Chinese Threat
Female Criminal Harassment
Gay Community Mischief
Gay Male Assault
Jewish Mischief
Lesbian Mischief
Multi Mischief

14 Division - 19 Occurrences

Black Criminal Harassment
Black Assault
Black 2 x Threat
Black Wilful Prom/Hate
Christian Mischief
Gay Male Mischief
Gay Male Assault
Gay Male Threat
German Assault
Japanese Mischief
Jewish Mischief
Lesbian Assault
Multi Wilful Prom/Hate
Multi Threat
Pakistani Wilful Prom/Hate
Pakistani Assault
Pakistani Robbery
Ukrainian Mischief

21 Division - 13 Occurrences

Black 4 x Assault
Black Threat
Gay Male Robbery
Jewish Mischief
Pakistani Bomb Threat
Pakistani Mischief
Pakistani Threat
Polish Assault
White Assault
White Mischief

22 Division - 16 Occurrences

Albanian Advocate Genocide
Black 2 x Assault
Black 2 x Threat

22 Division con't

Polish Threat
Polish Criminal Harassment
Somalian Mischief

23 Division - 18 Occurrences

Black 3 x Mischief
Black 2 x Wilful Prom/Hate
Black Assault
Black Threat
Gay Male Assault
Jewish Wilful Prom/Hate
Multi Assault
Multi Assault
Multi Criminal Harassment
Multi 2 x Wilful Prom/Hate
Multi Mischief
Pakistani Assault
Multi Assault
White Assault

31 Division - 11 Occurrences

Black Mischief
Black Threat
Bombay Threat
Gay Male Criminal Harassment
Jewish Threat
Multi Threat
Multi Wilful Prom/Hate
Multi Mischief
Pakistani Mischief
Punjabi Assault



Sicilian Threat (Death)

32 Division – 27 Occurrences

Black	2 x Wilful Prom/Hate
Black	2 x Threat
Black	Assault
Gay Male	Robbery
Jewish	5 x Mischief
Jewish	Criminal Harassment
Jewish	3 x Wilful Prom/Hate
Jewish	4 x Threat
Multi	Criminal Harassment
Multi	Wilful Prom/Hate
Multi	Mischief
Pakistani	Assault
White	4 x Mischief

33 Division - 7 Occurrences

Black	Assault
Chinese	Break & Enter
Jewish	2 x Mischief
Jewish	Advocate Genocide
Multi	Threat
Multi	Mischief

41 Division – 16 Occurrences

Black	Mischief
Black	2 x Threat
Black	Assault
Chinese	Mischief
Gay Male	Assault
Multi	Cause Disturbance
Multi	6 x Mischief
Pakistani	Threat
Pakistani	Mischief
Pakistani	Assault

42 Division - 17 Occurrences

Black	3 x Assault
Black	Criminal Harassment
Black	Mischief
Gay Male	Assault
Gay Male	Threat



Jewish	Assault	Lesbian	Threat
	<u>42 Division con't</u>	Lesbian	Assault
Jewish	Wilful Prom/Hate		<u>52 Division con't</u>
Jewish	Mischief	Multi	Assault
Multi	Wilful Prom/Hate	Multi	Criminal Harassment
Multi	Criminal Harassment	Multi	15 x Wilful Prom/Hate
Multi	Wilful Prom/Hate	Multi	3 x Mischief
Pakistani	Mischief	Serbian	Harassing Phone Call
Serbian	Assault	Trans-Gender	2 x Assault
Somalian	Threat	White	6 x Mischief
White	Wilful Prom/Hate		
			<u>53 Division – 12 Occurrences</u>
	<u>51 Division – 19 Occurrences</u>	Abortion	Criminal Harassment
Aboriginal	Mischief	Black	2 x Criminal Harassment
Black	Wilful Prom/Hate	Black	Wilful Prom/Hate
Black	Assault	Black	Threat
Christian	Assault	Jewish	Mischief
Gay Male	6 x Assault	Jewish	Wilful Prom/Hate
Gay Male	Mischief	Multi	4 x Wilful Prom/Hate
Gay Male	Criminal Harassment	Multi	Mischief
Gay Male	Threat		
Jewish	Criminal Harassment		<u>54 Division – 8 Occurrences</u>
Jewish	Mischief	Black	2 x Assault
Jewish	Threat	East Indian	Threat
Lesbian	Theft	Gay Male	Threat
Multi	Threat	Gay Male	Mischief
Police	Threat	Lesbian	Criminal Harassment
		Pakistani	Mischief
		White	Threat
	<u>52 Division – 54 Occurrences</u>		
Black	Wilful Prom/Hate		<u>55 Division – 15 Occurrences</u>
Black	6 x Assault	Black	3 x Assault
Black	Criminal Harassment	Black	Threat
Canada	Mischief	Black	Mischief
Gay Community	Mischief	Christian	Threat
Gay Community	Threat	Gay Male	Assault
Gay Male	4 x Threat	Jewish	Wilful Prom/Hate
Gay Male	3 x Assault	Jewish	Mischief
Gay Male	Robbery	Multi	3 x Mischief
Greek	Threat	Newfoundland	Assault
Iranian	Assault	Pakistani	Harassing Phone Call
Irish	Threat		
Japanese	Assault		

Bias Category Legend

18

AG-Age, DI-Disability, ET-Ethnicity, GE-Gender, LN-Language, MU-Multi-Bias, NA-Nationality
RA-Race/Colour, RE-Religion, SF-Similar Factor, SO-Sexual Orientation



White	Mischief	Intelligence Services, Sexual Assault Squad	Hispanic Pakistani	Wilful Prom/Hate Sexual Assault
-------	----------	--	-----------------------	------------------------------------

Detective Support Command
 Special Investigations

Intelligence Services,	White	Crim/Harassmen
Intelligence Services,	Multi	Wilful Prom/Hate
Intelligence Services,	Jewish	Wilful Prom/Hate



HATE CRIME UNIT EDUCATION AND COMMUNITY OUTREACH INITIATIVES

In 1999 the Hate Crime Unit continued to focus its efforts in prevention, pro-active education, and criminal investigations of hate motivated crimes in Toronto.

Investigative Support Role and Intelligence Gathering

- The Hate Crime Unit continued to network with Toronto Police Service Divisions, as well as Provincial, National and International Police Services.
- The Unit assisted Police Divisions with investigative support case tracking and relevant intelligence exchange.

Hate-Bias Training for Police Officers

- The Hate Crime Unit continued to provide assistance to uniform officers in the areas of training on the identification of hate bias crimes, and by providing intelligence on organized hate groups.
- Training was conducted at Police Divisions and at the C.O. Bick College.
- The Unit conducted hate-bias quarterly meetings with each Divisional Hate Crime Investigation Co-ordinator.

Hate-Bias Training For Recruit Classes At Ontario Police College

- The Hate Crime Unit continued to provide information sessions for the police recruit classes at the Ontario Police College.

Toronto Police Service-Civilian Diversity Classes at C.O. Bick College

- The Hate Crime Unit delivered hate bias crime training for civilian members of the Toronto Police Service throughout 1999.



Hate on the Internet Training

- Members of the Toronto Police Service received training on investigations concerning “Hate on the Internet”, from the Simon Wiesenthal Centre of Toronto.

The Respect Certificate Program

- The Hate Crime Unit, in conjunction with the Community Policing Support Unit, completed the implementation of the Respect Certificate Program with Community Response Managers at each Toronto Police Division.
- The Respect Program seeks to publicly recognize Youth & Community members, for promoting positive deeds in the community.

Community Outreach

- The Hate Crime Unit, in conjunction with The North York Committee on Community Race & Ethnic Relations, The Metropolitan Toronto Housing Authority, Community Unity Alliance, The John Freeman Walls Historic Site & Underground Railroad Museum, and The Toronto Transit Commission produced and distributed pamphlets entitled “Working Together To Create Respect and Promote Diversity.” The distribution took place at the various subway stations across the city of Toronto.
- The Hate Crime Unit in conjunction with the Community Policing Support Unit developed new Hate Crime handouts and posters to assist the community and schools in the identification and reporting of Hate Crimes.
- Members of the Hate Crime Unit attended the “International Hate on the Internet Conference” organized by the League for Human Rights B’nai Brith, Canada in Toronto and participated in panel discussions.
- The Hate Crime Unit continues to meet and consult with the League for Human Rights-B’nai Brith Canada, the Gay Lesbian Community, The City of Toronto Committee on Anti Racism and Anti Hate and the Canadian Jewish Congress.



- Hate Crime Unit has undertaken to improve the method of analyzing the effectiveness of the Police Service's initiative to reduce hate bias crimes. The method employed by the Unit in co-operation with the community, is dialogue with Community representatives. The initial meeting was held at the Toronto Canadian Jewish Congress offices in June of 1999.

The following communities were represented:

- | | |
|--|---|
| Ahmadiyya Movement in Islam-Toronto East Branch | Katipunan Ng Bagong Pilipino Community |
| Armenian Community Centre Toronto | Latino-Canadian Community Association of Scarborough |
| Black Business and Professional Association | League for Human Rights of B'nai Brith Canada |
| Black Community Police Consultative Committee | National Action Committee on the status of Women, |
| Canadian Arab Federation Toronto | National Congress of Italian Canadians, Toronto |
| Canadian-Polish Congress | Native Canadian Centre of Toronto |
| National Association of Japanese Canadians Toronto Chapter | North York Sikh Temple |
| Chinese Canadian National Council Toronto Chapter | Ontario Provincial Council, The Korean Canadian |
| City of Toronto Committee on Anti-Racism and Anti-Hate | Roma Community and Advocacy Centre, |
| Council of Agencies Serving South Asians | Somali Community Information Centre |
| Culture and Education Centre | Somali-Canadian Association of Etobicoke |
| Desh Pardesh & SAVAC | South East Asian Services Centre |
| Jane-Finch Concerned Citizens Organization | Tamil Resource Centre |
| Canadian Jewish Congress | The Hispanic Development Council, |
| Gay Lesbian Community Toronto | Toronto Police Services French Consultative Committee |
| Hellenic Canadian Federation of Ontario | Ukrainian-Canadian Congress |
| Jamaican Canadian Association | United Ukrainian Canadians |
| Jane-Finch Concerned Citizens Organization | Urban Alliance on Race Relations |

Media Outreach

- Hate Crime Unit members provided numerous interviews to local, national and international media on Hate Bias Crime.

Community/Youth/and Police Initiatives

- Chief David Boothby, in conjunction with the Community Policing Support Unit, Hate Crime Unit, North York Committee on Community, Race & Ethnic Relations, Toronto Ambulance Services, and the John Freeman Walls Historic Site and Underground



Railroad Museum accompanied Toronto Youth to visit the Underground Railroad Museum in Puce, Ontario.

- The Hate Crime Unit assisted the Toronto Police Service Board in developing recommendations for a Youth Relations Focus Group to improve police and youth relations in Toronto.
- The Hate Crime Unit, in conjunction with, Significant Music Inc., local School Boards, the City of Toronto Committee on Anti-Racism and Anti-Hate and Students from various high schools organized events for The International Day For The Elimination of Racial Discrimination at Metro Hall Rotunda. The Students showcased “Positive Youth Initiatives”, and addressed “Hate activity through Music and Arts”.
- The Hate Crime Unit conducted Hate Crime presentations for local Schools, (students and teaching staff), Community Colleges, Student Crime Stoppers and City Council Committee Emergency Protective Services.

The Hate Crime Unit is committed to the Prevention, Education and Investigation of Hate Motivated Crimes. Open consultation and support with the community will help us achieve this goal.